

JND391 – Mistletoe Wreath -- by John Lockwood



Instructions compiled by June Smith.



John has created a 'You Tube' video using JND391 Mistletoe Wreath, dated 10th August 2023, I have incorporated them in this set of Instructions. I would advise that you visit them as well as following these instructions through to the end before commencing the project.

June's Tips: This applies to any die, place your pieces onto your cutting plate at an angle, this helps to cut the dies in one pass. Also use your glue eraser to remove any unwanted marks.

Information:

Wreath:

Die 1: Outer Decorative Square (no inner or outer cutting die).

Die 2: Square cutting die 3⁵/₈" x 3⁵/₈".

Die 3: Outer Wreath cutting die.

Die 4: Wreath cutting die.

Die 5: Inner Wreath cutting die.

Die 6: Inner circle die.

Die 7 - 11: Mistletoe Sprigs

Die 12 & 13: Mistletoe Berries

Preparation:

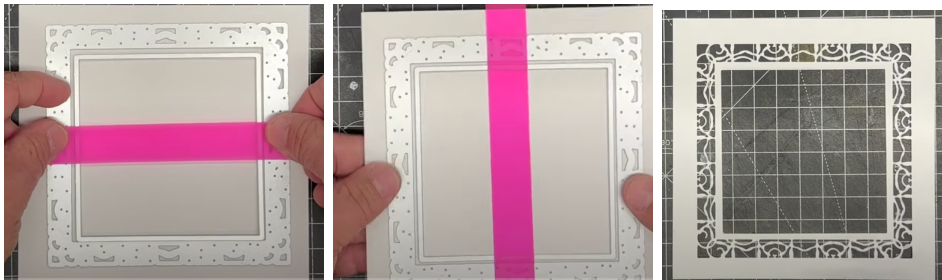
Make a mat & layer of Coconut White card 6" x 6" & Christmas Green at 6¹/₈" x 6¹/₈".

Materials:

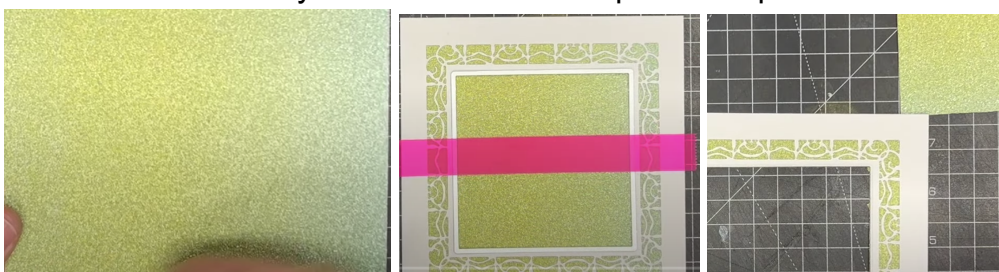
7" x 7" White Card Blank
JND412 Ornamental Words (12)
JND391 Mistletoe Wreath (13) – just using die no 4.
Essential Coconut White Card
Essential Christmas Green Card
Craft Artist Ombre Glitter Card (green – yellow)
Craft Artist Glue Glaze
Pinflair with cocktail stick or similar
A5 Die Cutting Machine
White Pearl Dimension, or similar
3M Craft Mount Permanent Adhesive Spray Glue
Craft Kit

Method:

- Cut a piece of Coconut White card cut to $5\frac{3}{4}$ " x $5\frac{3}{4}$ ", Take a long piece of pink tape and using John's tape trick of picking up the inner square die no 2, then using the handles of the tape, position this inside die no 1 from the mistletoe set and add evenly onto your white card. As this is a detailed die, you will need to run it through your die cutting machine one way, then turn the die and run it through again to make sure all the bits have cut out, this is a standard procedure for all detailed dies.



- Using 3M Spray glue onto the back of the frame adhere this onto a $5\frac{1}{2}$ " x $5\frac{1}{2}$ " square of Yellowy Green Ombre Glitter Card. We then want to cut out the centre square using die no 2 from the set. When you run this through your die cutting machine this also helps to meld together the frame onto the glitter card. Carefully remove the centre square and put to one side.

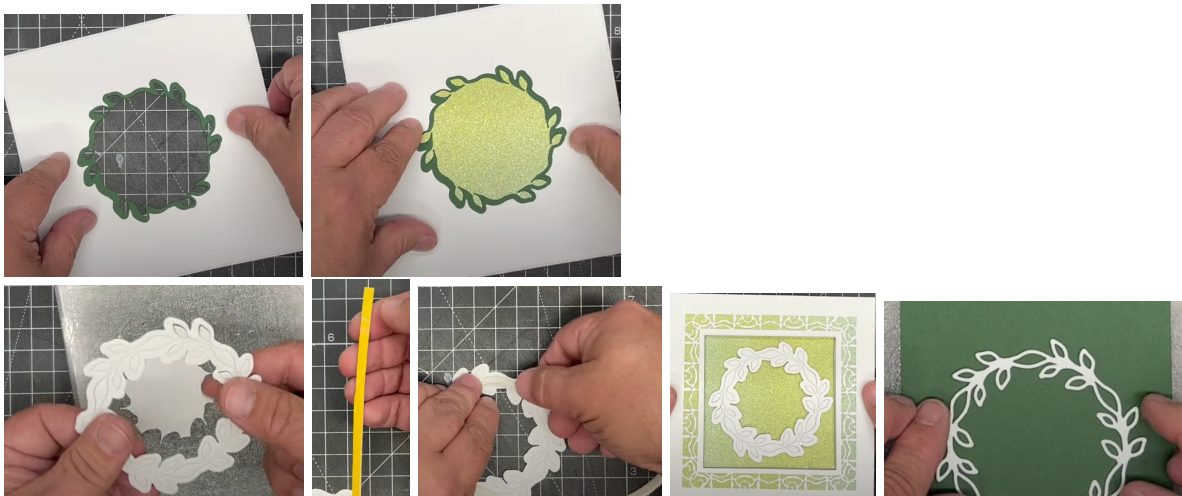


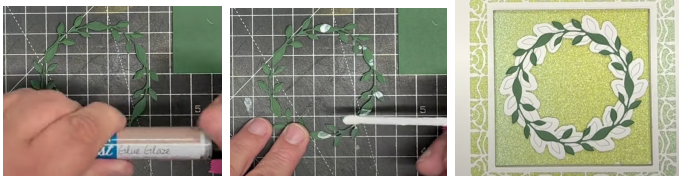


- Cut another piece of the Coconut White card to 5½" x 5½". Turn your frame over, add foam tape onto the centre of the frame, remove the yellow backing and add another layer of foam on top. It is then much easier to remove the yellow backing and add the white square onto it so you can make sure it is even. You have choice then which way your frame will go, so the green yellowy colours going right to left or top to bottom.
- If you go light yellow to green on the frame, then we need to add the square you cut out earlier so that it is green to yellow, so the opposite. Add wet glue onto the back of the Ombre Square and adhere into the frame.

Wreath Centre:

- John is using a piece of coconut white card that he cut from the JND409-Sam's Snowflake die set which has a stitched cutting edge 6" x 6" as he wants to use the waste for another project. You of course, could use any scrape of white card. Bring in die 3, 4 & 5 from the wreath set, place the dies roughly in the centre, tape them down and run them through your machine just the once because we want the fall away pieces from the wreath to stay in place. Take a long piece of foam tape, cut it in half down the centre, then remove the yellow backing from one piece and add this around your wreath it is much easier when you remove the backing. Place the wreath in the middle of your card so that one of the 6 single leaves is at the top.
- The white and green cut outs can be offset to make a frame over the waste bit of Ombre card for another project.





- Then take a scrap of the Christmas Green card and cut out just the inside finery wreath, which is die no. 4, going backwards and forwards a couple of times in your die cutting machine. You can then add spray glue onto the back and adhere onto your card or, as John is doing, he uses the Craft Artist glue glaze dabbed onto a few places which means that not all the leaves are stuck down which is the look he wants.
- Add wet glue to the back and add straight onto your top folding mat & layered prepared card blank.



- To finish off we just need to add a sentiment, so we will use one of the 'Noel' dies from the Ornamental Words set. Cut a piece of Coconut white card to 2½" x ¾", pop the Noel die into the centre, tape it down and run through your die cutting machine. Then spray glue the back and place it onto a ¾" scrap piece of the Ombre card along the coloured part of your choice. Snip off the excess and add a small piece of foam tape to the back and adhere onto the front of your card either in the centre of the wreath or offsetting it over the edge.
- Finally, we just want to add some decoration to the card, John has got some of the single mistletoe sprigs with white pearl dimension left over from another project that he is using. Add glue glaze on the back and add onto the left of the 'Noel'. Using the white Pearl Dimension add onto the join of the double-sided leaves all the way around.



Your card is then complete. I hope you have enjoyed these instructions.