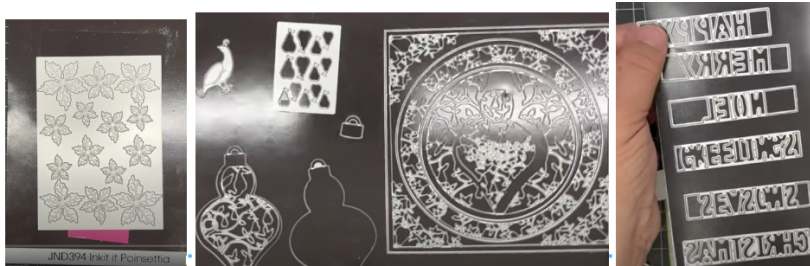


JND394 – Ink-it Poinsettia & JND399 Mistletoe - by John Lockwood



Instructions compiled by June Smith.



John has created a 'You Tube' video using the above-mentioned dies, dated 3rd August 2023. I would advise that you visit them as well as following these instructions through to the end before commencing the project.

Information:

The Ink-it Poinsettia die plate means that if you ink up the die, place onto your card stock and run through your die cutting machine, all the ink gets transferred onto the poinsettia leaves and you can see all the veins very clearly, it is beautiful. It also has a secondary purpose, if you just add the die onto some satin or mirror card and run through your die cutting machine you get all those vein details showing up on the leaves without having to ink it. You can use a single Poinsettia or cut out a set in green and add onto the back to make a poinsettia with green leaves. The plate cuts out 14 flowers or if you double them up you get 7 flowers.

JND395 - Pear Tree Bauble (12)

Die 1 – Outside Square 5½" x 5½".

Die 2 – Pear Tree Corner Frame 5¼" x 5¼".

Die 3 – Plain Circle 5".

Die 4 - Pear Tree Circle 4¾" x 4¾".

Die 5 – Inner Plain Circle 3¾" x 3¾".

Die 6 – Inner Pear Tree Circle in a drop bauble shape 3½" x 3½".

Die 7 – Outer Drop Bauble.

Die 8 – Inner Drop Bauble pattern 1.

Die 9 – Inner Drop Bauble pattern 2.

Die 10 – Crown for Drop Bauble.
Die 11 – Partridge die.
Die 12 - Plate with 13 various size pears to cut out.

JND399 Mistletoe (7)

Die 1 - Left facing multi sprig Mistletoe.
Die 2 - Right facing multi sprig Mistletoe.
Die 3 - Left facing 4 sprig Mistletoe.
Die 4 - Right facing 4 sprig Mistletoe.
Die 5 - Left facing 2 sprig Mistletoe.
Die 6 - Right facing 2 sprig Mistletoe.
Die 7 - Plate with 6 tiny circles which are the berries.

Preparation the day before:

Make up the Poinsettia and Mistletoe and add in the White or Silver Pearl Dimension onto them, then leave to dry overnight, you will need 3 pieces of Mistletoe. The instructions are below.



Materials:

7" x 7" White Top Folding Card Blank
Ink-it Poinsettia JND394 (there are 14 Poinsettia from each plate).
Pear Tree Bauble JND395 (12)
Bauble Words JND408 (6)
Star Embossing Folder (coming soon)
Craft Artist Satin Gold Card
Plain Smooth Stamping card 300gsm
Craft Artist Essential Coconut White Card
Pearl Dimension – White or Silver
Gold fusion Ink in Lime and Kiwi, using a separate dauber for each.
3M Craft Mount Permanent Spray Adhesive
Glue Glaze
2mm Foam Tape
Craft Kit

Method:

- Take an A4 sheet of satin gold card, cut it in half and then cut both pieces in half again, you have created 4 x A6 pieces. Or you could cut a piece 5¾" x 4½" and add the die plate to it, tape it down and run through your die cutting machine – this is a detailed die, so I recommend that it goes forward and back to make sure it has all cut out. Pinch each petal downwards and fold them up

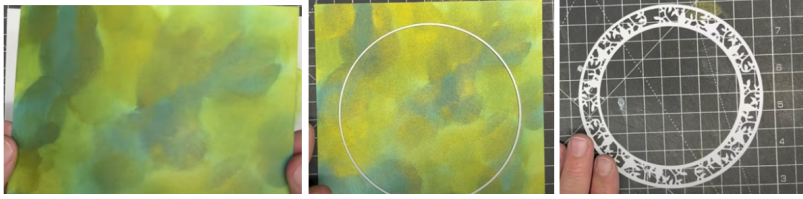
towards the middle to shape them. Then add a drop of white or silver Pearl Dimension into the middle and leave to one side to dry, the Pearl dimension takes about 30 minutes to be touch dry or 24 hours fully dry. These are the things that you could make a batch of the day before and store in a box until you need them. See photo of one that has dried overnight. Another Tip is to cut them from red or white card and also a set from green card, then when you add a green behind a red or white you have another beautiful creation – I want to have a go at that myself.



- Take a piece of Plain Smooth Stamping White card and either cut to 4 x A6 pieces or just cut down to one piece 5¾” x 4⅛”. Bring in the 2 largest Mistletoe dies, arrange them evenly onto the card, tape them down and run through your die cutting machine. Keep the dies in position but remove the tape, then place onto a media mat or a scrap piece of card. Using a separate ink dauber for each of the Gold Fusion Lime & Kiwi inks, go around randomly with the Lime over the dies, then do the same with the Kiwi, finally inking the edges of the card and blending the colours in, see photos below. When you remove the die cut pieces you will notice that there is a lovely white edge to the mistletoe. Add a drop of the White Pearl Dimension onto the berries, or you could cut from a scrap of White card the little die in the set that cuts out 6 berries, or if you prefer you could use stick on tiny pearls. Leave to dry.



- Take a piece of plain white card cut to 6¼” x 6¼”, add this onto your scrap piece of card we just used, and go over it with the Lime and Kiwi Gold Fusion inks the same as we did on the background mistletoe piece, finally finishing off with the blender that has the Lime working this over the top to fill in any gaps.



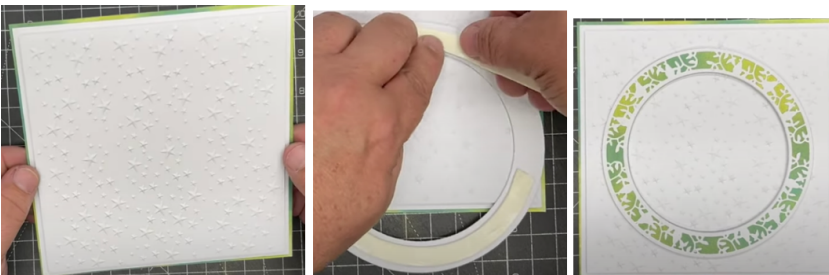
- From the Pear Tree Bauble set take die no 3 which is a 5" circle, add this onto the front evenly and run through your die cutting machine.
- Take dies 3, 4, and 5 together from the Pear Tree Bauble set, cut out from a piece of Craft Artist Essential card in Coconut White. Spray glue the back of this and add it onto the circle.



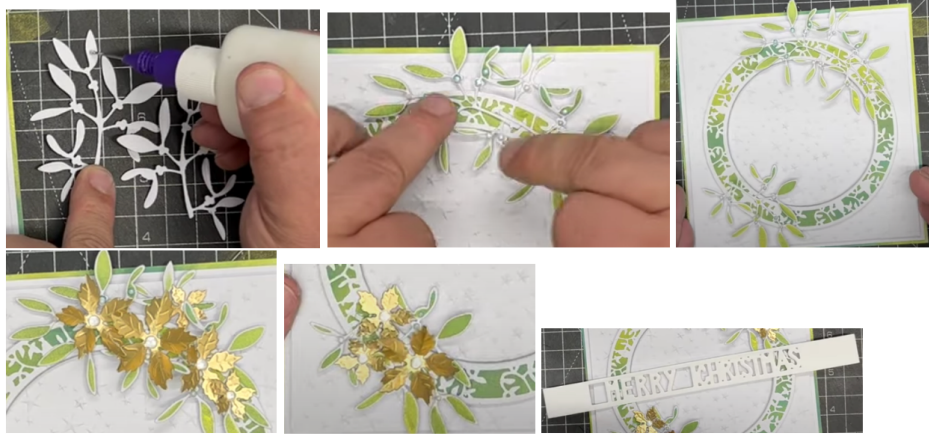
- We now need to cut the centre out using die no. 5, it is easier to do this after we have stuck it to the circle. Save the circle for another project.

Mat & Layers:

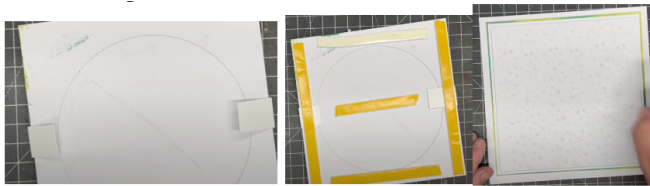
- Bring back in your 6¼" x 6¼" coloured square with the circle cut out. Cut a piece of white card to 6" x 6", using wet glue around the outside adhere this onto the coloured square.
- Then cut another 6" x 6" piece of white card, run it through your star embossing folder (coming soon) and trim it down to 5¾" x 5¾". Using wet glue add the mat and layers together.
- Take your prepared ring and add foam tape onto the back, remember if you remove the yellow backing you can easily mould the foam around the circle, if you leave it on you get lots of pleated areas.



- We can now add our 3 pieces of Mistletoe, using a fine applicator bottle with Craft Artist Super Tacky Glue inside, add a little dab onto the back of each sprig and bottom stem, then add this onto the top right of the circle, repeat for the opposite mistletoe but snip off the bottom sprig so that the join in the middle is straight, then you can poke the little bit onto the top. Finally repeat again for the bottom left Mistletoe.



- Bring in your prepared Poinsettia and add glue glaze on the back to adhere these onto the mistletoe.
- Cut a ¾” strip of Coconut White card and cut out of the centre the ‘MERRY’ and ‘CHRISTMAS’ dies, fold the ends of the strip over your card, turn it over and use foam tape around the sides capturing the folded flap as well and also a piece in the centre. Remove the yellow backing and add this onto the front of your prepared Card Base, checking that it is a top folding card to hold the weight.



Your card is then complete. I hope you have enjoyed these instructions.

- Here is a card that John has made using the waste background piece which has had water splashed on it with a fan brush, to create the water droplets, he added a bit of acetate to the back and made it into a shaker card, with more mistletoe, ‘Noel’ die cut in silver and green/white bakers’ twine, added some silver bells, all added onto a silver and white mat and layer.

