

JND395 – Pear Tree Bauble - by John Lockwood



Instructions compiled by June Smith.



John has created a 'You Tube' video using the above-mentioned die, dated 3rd August 2023. I would advise that you visit them as well as following these instructions through to the end before commencing the project.

Information:

JND395 - Pear Tree Bauble (12)

Die 1 – Outside Square 5½" x 5½".

Die 2 – Pear Tree Corner Frame 5¼" x 5¼".

Die 3 – Plain Circle 5".

Die 4 - Pear Tree Circle 4¾" x 4¾".

Die 5 – Inner Plain Circle 3¾" x 3¾".

Die 6 – Inner Pear Tree Circle in a drop bauble shape 3½" x 3½".

Die 7 – Outer Drop Bauble.

Die 8 – Inner Drop Bauble pattern 1.

Die 9 – Inner Drop Bauble pattern 2.

Die 10 – Crown for Drop Bauble.

Die 11 – Partridge die.

Die 12 - Plate with 13 various size pears to cut out.

Materials:

8" x 8" White top folding Card Blank

Black Gloss card cut to $7\frac{7}{8}$ " x $7\frac{7}{8}$ ".

Essential Coconut White card

Craft Artist New Gold Satin Card

Craft Artist Black Gloss Card

Presscut Plain Squares PCD04 (32) – die no 2 = $7\frac{3}{4}$ "

Presscut Stitched Squares PCD205 (16) – die no 3 = 7"

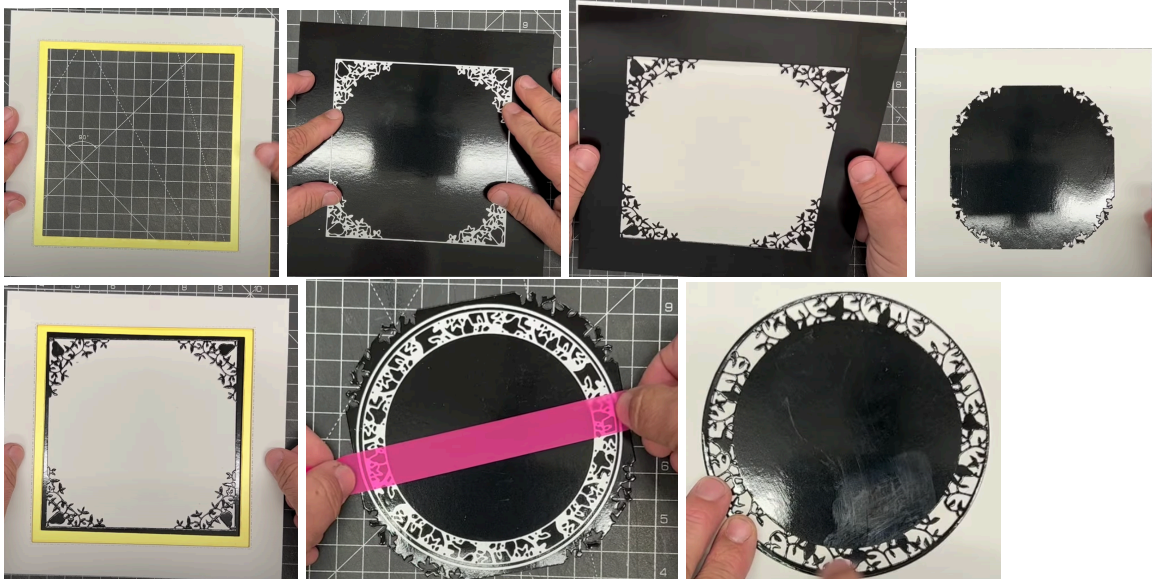
Glue Glaze

Pinflair

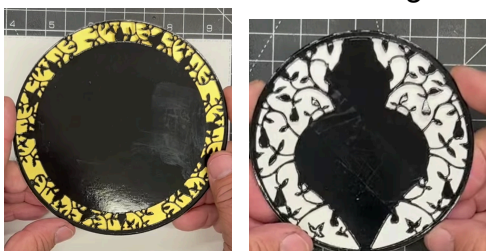
Craft Kit

Method:

- Cut a piece of Essential Coconut White card cut to $7\frac{3}{4}$ " x $7\frac{3}{4}$ " or you could use die no 2 from the Presscut Plain Squares PCD204 set. Using die no 3 which is a 7" stitched square cut out from the centre to make a frame.
- Cut a piece of New Gold Satin card to $7\frac{1}{2}$ " x $7\frac{1}{2}$ " or you could use die no 2 from the Presscut Plain Squares PCD204 set.
- Then add die no 1, which is the stitched outside die from the Pear Tree Bauble die set evenly in the middle and cut that out to make a frame.



- Using die no 3 from the set cut out a circle from the New Gold Satin card. Then cut a piece of the Black Gloss card to $6\frac{1}{2}$ " x $6\frac{1}{2}$ ", add die no 2 from the Pear Tree Bauble set, and cut that out of the centre. Spray glue the back of this and add onto the gold circle.



- Then take dies no. 4 & 5 together, again using the long tape trick, cut them out of the black card, add spray glue to the back and adhere onto a cut out same size, white circle.
- Take the pear patterned die and the outer bauble die, cut them together from black card. Then using just, the outside bauble die cut this from the New Gold Satin card. Spray glue the black and add onto the gold – add a strip of foam tape to the back.



Constructing our Card:

- Working from the outside, add foam tape to the back of your frame piece, remove the yellow backing, add a few drops of wet glue to stop the static and add onto your gold frame. Add foam tape to the back, remove the yellow backing, add a few drops of wet glue, and adhere onto your black frame.



- Turn the frame over and add another row of foam tape near the centre edge, remove the backing and add this onto a 7 $\frac{3}{4}$ " x 7 $\frac{3}{4}$ " piece of coconut white card.
- Take the central circle, add 3 strips of foam tape to the back, remove the yellow backing and adhere onto the centre of your card making sure that the 4 gaps in the frame are at north, south, east, and west. Repeat this on the black and white bauble circle, adding onto your card front.
- Finally adding a 3mm piece of gold ribbon, fold it in half and thread through the top of your yellow and black bauble, take the 2 ends and push through the loop and pull gently onto the front. Snip off the ends, then again with foam tape behind the bauble add this onto the front of your card.
- We can now add wet glue to the back and adhere onto your 8" x 8" White top folding Card Blank which has got the black gloss layer on it.



- Take an offcut of the gold satin card and add the pear plate and little partridge die onto it, tape it down and run through your die cutting machine. Using glue glaze to attach the pears and partridge into place. The smaller pears will go onto the bauble area and the black/white onto the inner circle. The larger pears around the 4 corners.
- Finally mould the partridge in your fingers just to give it a bit of shape, add a little bit of Pinflair onto the back and adhere onto the bottom corner of the bauble.



Your card is then complete. I hope you have enjoyed these instructions.