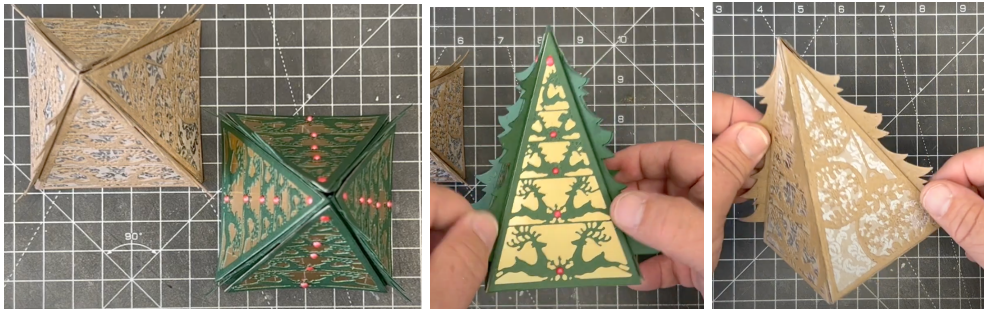
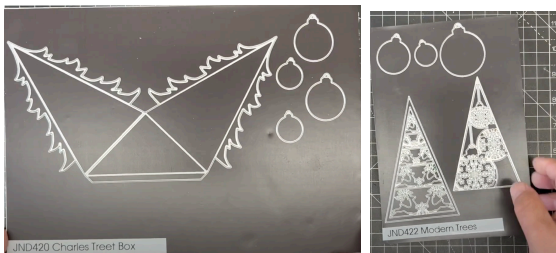


JND420 Charles Treat Box - by John Lockwood



Instructions compiled by June Smith.



John has created a 'You Tube' video using Charles's Treat Box, dated 11th August 2023, I have incorporated these in this set of Instructions. I would advise that you visit them as well as following these instructions through to the end before commencing the project.

June's Tips: This applies to any die, place your pieces onto your cutting plate at an angle, this helps to cut the dies in one pass. Also use your glue eraser to remove any unwanted marks.

Information:

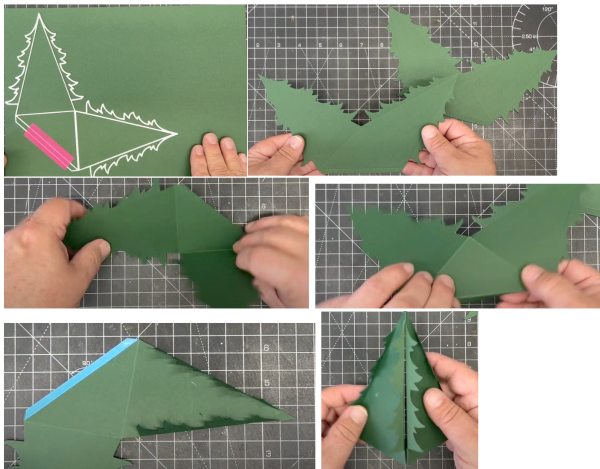
These boxes are perfect for decorating your tree, or Christmas table, or all-round home decoration, something you could make with your children or grandchildren. There are also different panel dies to match, which are sold separately. Both sets have small outside baubles all different sizes which will compliment all the other baubles from this year's Christmas 2023 range and previous years. We will be using one of the decorative panels on this sample.

Materials:

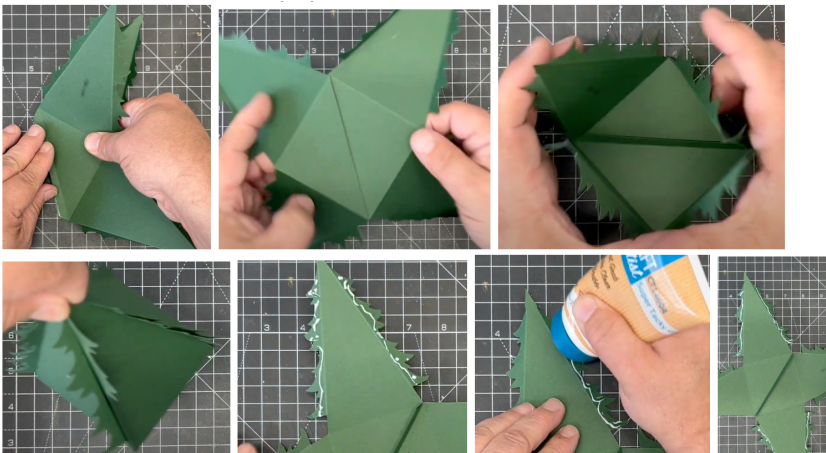
Christmas Green Card
JND420 Charles Treat Box (5)
JND422 Modern Trees (6)
6mm Blue Powertape
CA Super Tacky Glue
CA Glue Glaze
Red Pearl Dimension
Craft Kit

Method:

- From an A4 piece of Christmas Green Card, we will need to cut 2 of the main panels. If you place the die onto the bottom left-hand side, see photo, you will be able to get another piece from the opposite side.
- With the reverse side facing you, fold all the 3 embossed lines forwards, then turn it over and they are all mountain folds.
- The bottom fold line is exactly 6mm, ideal for adding a good quality double sided tape so add 6mm blue Powertape onto one of the panels only. Before removing the blue covering, we need to fold all the tree flaps over, see photo. You will notice that the flaps do not go right to the very top, this is correct, and you see this when you fold the flaps up.

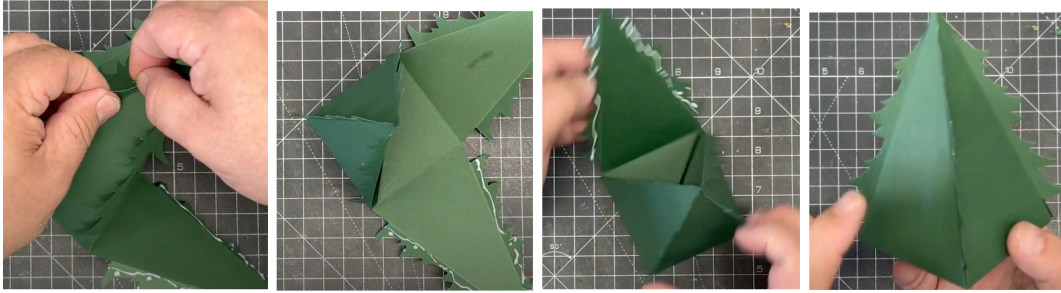


- We can now remove the blue covering and put them front to front, then when you turn it over you can see the square base. Bring the sides up to see the shape of the treat box – it is at this stage you could decide if you wanted to add a bag of sweets, a small gift or something like that, you could use a small whole punch on the tops of the tree and thread ribbon through it and hang on your Christmas Tree or onto your Christmas table, then when you undo the ribbon the sides pop down to reveal the treat.



- To secure the box, open it out flat so you are facing the front, take a good quality wet glue, the Craft Artist Super Tacky Glue is excellent for this, add the glue along the 2 flaps on one tree, then turn it around and repeat on the opposite tree flap. You can then bring one side together, move the flap gently

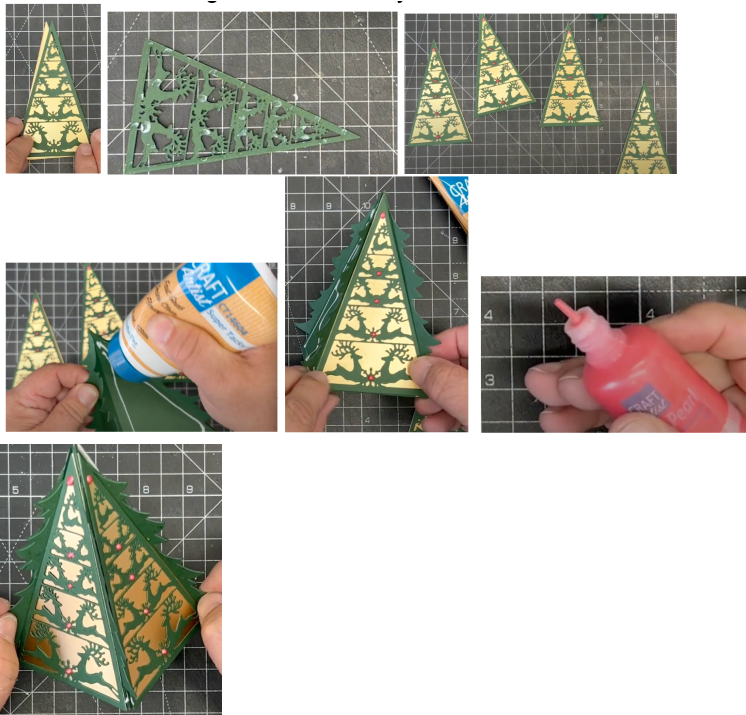
to activate the glue and press down. Repeat all the way around. That is the way to make the basic Treat Box.



Modern Trees:

John has previously made 4 of these panels in total, adding Red Pearl Dimension onto the middle of each pair of leaping stags, as well as at the top point of the panel. It takes about 30 minutes for the pearl to be touch dry and 24 hours to be completely dry. This is how he did one of them.

- Take the outside panel from the Modern Trees die set and cut that out of Gold Satin card.
- Then using both the inside leaping stags and outside dies, cut the 2 dies together out of the same Christmas Green card.
- Using glue glaze or spray glue add onto the back of the green leaping stags and then add it onto the Satin Gold panel. Add wet glue onto the tree panel itself and adhere the front panel onto it – repeat for all 4.
- Finally, add a little drop of the 'Red Pearl Dimension' onto the middle of each of the stags as well as one at the top. Put to one side to dry for 24 hours. It is a good idea to make a batch of these up the day before or leave them to dry before adding onto the front of your treat box.



Your creation is then complete. I hope you have enjoyed these instructions.