

JND392 -Diorama Die – by John Lockwood



Instructions by June Smith

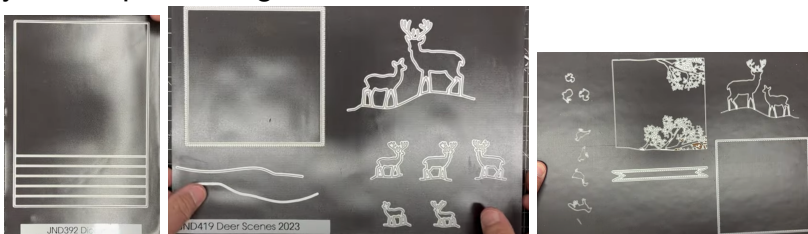
John has created a 'You Tube Video' dated 27th September 2023, using JND392 Diorama, where he demonstrates how to make a card. I would advise that you visit it as well as following these instructions.

June's Tips: This applies to any die, place your pieces onto your cutting plate at an angle, this helps to cut the dies in one pass. Also use your glue eraser to remove any unwanted marks.

Information:

The new Deer Scenes 2023 die set is brand new for this year, you get a square notched die, then a die which has a stag and a deer standing on a hill. Also 5 different small individual deer dies and 2 shaped long hill pieces which can be used as different heights of hills for the deer to be grazing on. These will all work additionally alongside previous deer scene dies, or just using the lines to add little trees in the background.

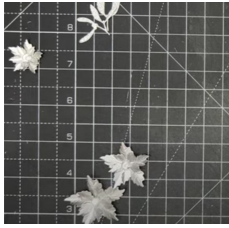
We will also be using the additional new project book 1 die set which is new this year and contains a stag and deer in a different orientation, an outside cutting die, an inner tree cutting die, a notched double ended tag die and 7 tiny animal die which you can put among the trees.



Preparation:

From Silver Glitter card cut a set of the JND Mistletoe die. Using Silver Satin card cut a set of flowers using the JND Ink-it Poinsettia dies. Mould, shape & layer up the

Poinsettia flowers using the same size petals and off-setting one on top of the other. There are a separate set of instruction within the group on how to make these up.



Materials

CA Essential White Card

JND392 Diorama Die (1)

JND419 Deer Scenes 2023 (9)

Presscut Plain 4" Circle Die from PCD206, for the large set and PCD232 from the smaller set.

Winter Trees Embossing Folder.

Silver Satin Card (for the Poinsettias)

Silver Glitter card (for the Mistletoe Sprigs)

A5 Die Cutting Machine

Crafts Too Template Sheets

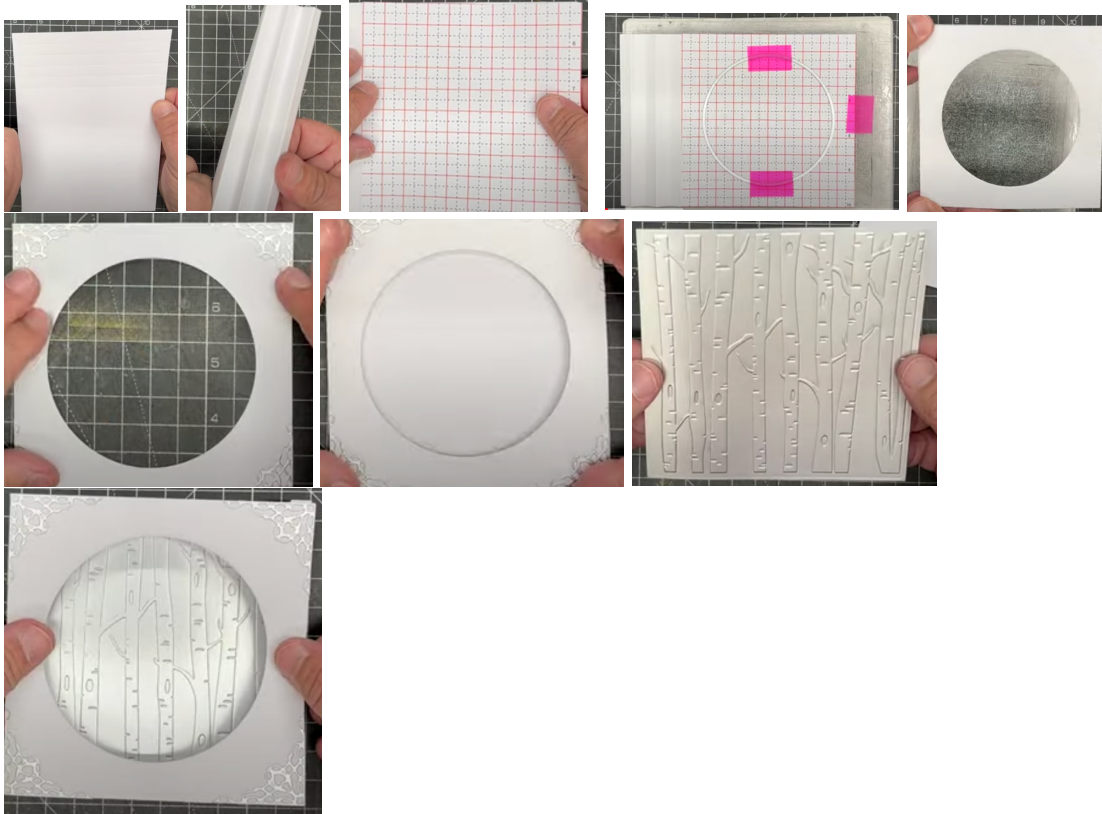
CA Blue Powertape 6mm

2mm Foam Tape

Craft Kit

Method:

- Cut an A4 sheet of card in half to make 2 x A5 pieces, cut the Diorama Die out of each piece, it will easily fit onto an A5 die cutting machine. What you will get is a piece that has all the score lines embossed onto it. Fold both the pieces onto its front and fold mountain, valley, mountain, valley, and mountain, you will end up with 2 pieces that have a zigzag side. This is what we will be using to put the different layers of our scenes on. If you had cut out the dies without folding these lines you would lose them when you run the die through your machine.
- Cut a piece of the template sheet down to 5" x 5", place evenly onto the front of your card, then place this evenly onto your cutting plate and secure with the pink repositionable tape, that way it will not move. Place the 4" circle die in the middle, tape it down and run through your die cutting machine.
- To decorate the front of this John has cut out from silver card, 4 of the 'Genoa Corners, which is a die that we do as an exclusive to Create & Craft. Add wet glue to the back and adhere these onto the front of your card. Then bring in the back of your card and place behind the front cut out circle piece, we then have the start of our card.

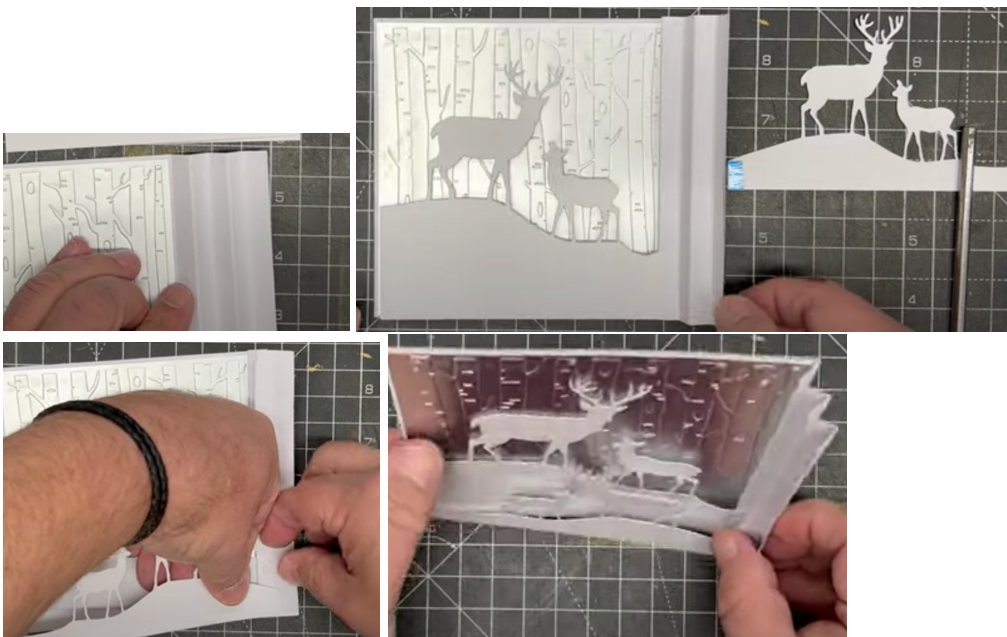


- Add CA Super Tacky Glue to the back and adhere evenly onto the inside of the background piece. We now need to cut the scenes for inside. So cut the CA Essential white card to just about 1/16th of an inch smaller than 5” (or 12.5cm) square. From the square piece add the adult & smaller deer, on a hill die (from the new box kit), place centrally onto your card. Then from the scrap of white card that is left over cut the smaller die – you have a real choice where you cut this from, central, to the side, or the other side, it is up to you, this means that they will fit exactly together.
- You will notice that when you cut them out the pattern is cut around the deer but not at the ends – so all you need to do is take a pair of scissors and snip off the ends from both pieces.

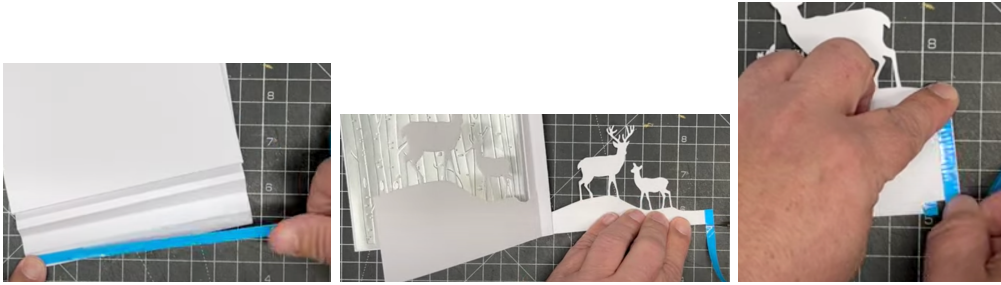




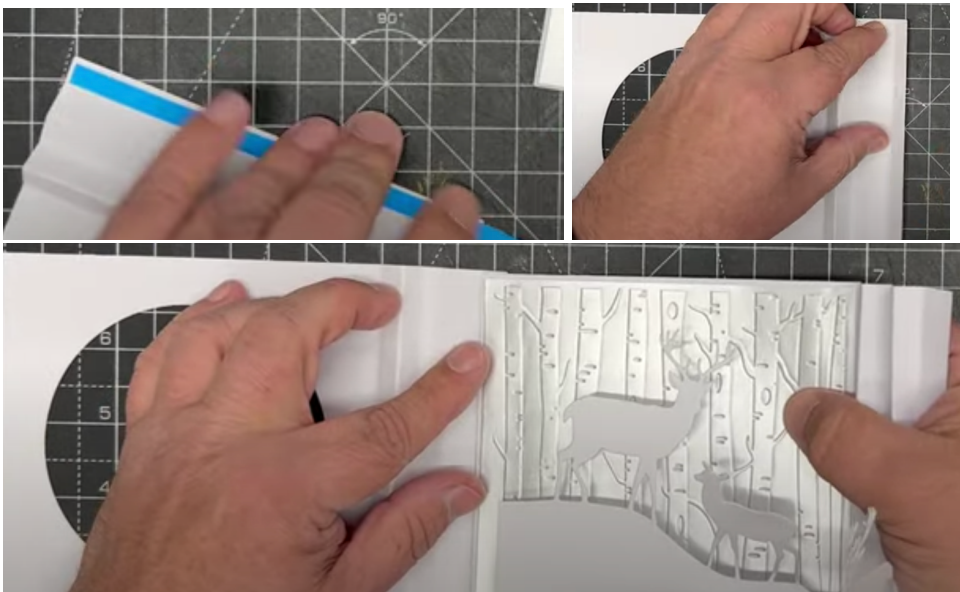
- Then when you place them together see photo above, you can see how they will look on the design, with the larger hill at the back.
- Bring in your back panel with the 2 mountain folds on the right-hand side, this is where we are going to attach the cut pieces. Turn the 2 deer pieces over and using CA Blue 6mm Power Tape add a piece down the left-hand side - (remember this is the back view). The Blue Power is the strongest on the market, if you haven't got that, you could use a **good quality** red liner tape.
- Turn both deer strip over We are going to add the largest panel to Remove the blue backing from the largest of the cut out's, turn it over and attach it to the mountain fold nearest the back.



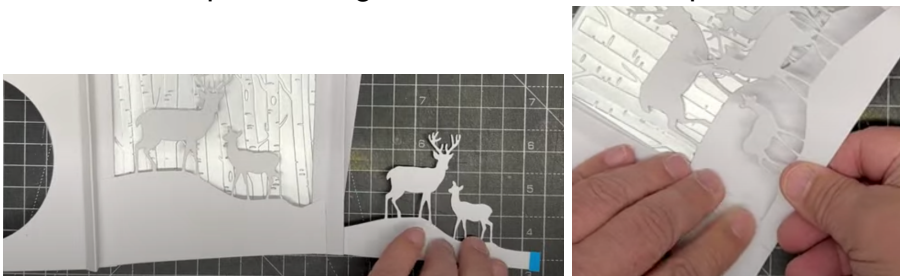
- Do exactly the same with the smaller one, remember you are going a step forward, open it out and place it on top where the valley fold is.
- We now need to add the other side, so turn the left-hand side card over and again add 6mm Blue Power tape to the whole length of the end fold, see photo. Turn it over and flick out the small deer flap you just attached, add power tape to the end. Flick out the larger flap and add blue tape onto that.



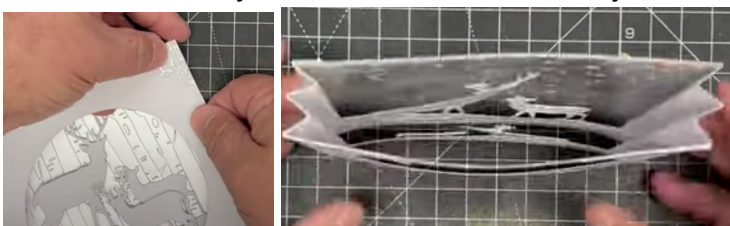
- Bring in the other folded side so that the front of the card with the corners on is facing your table. Add a strip of the blue powertape down the side. Remove the backing and bring across the back panel and marry them together.

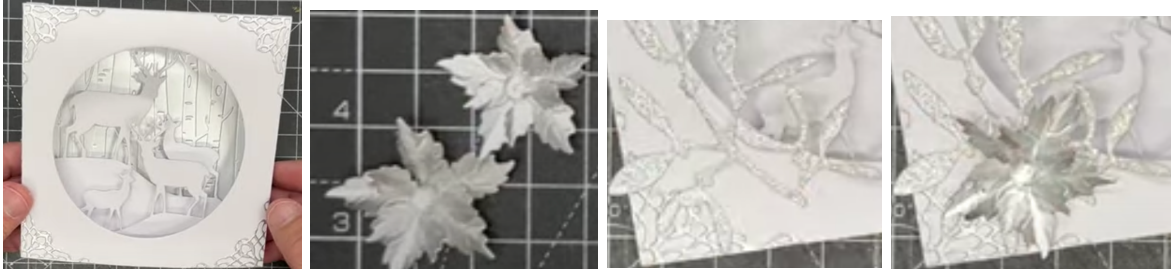


- Remove the blue backing from the larger flap and adhere this onto the fold. Then repeat this again with the smaller flap.



- Press down the fold on the right-hand side, hold it in place and remove the blue backing tape. Bring over the front panel and secure it evenly onto the right-hand side. If you then stand it up you can see the deer layers in the middle of your card. This will also lay flat for posting.





- Using wet glue add the silver glittered Mistletoe sprigs onto the bottom left of your card front, and one piece onto the top right. Then add 3 of the silver satin Poinsettia on top of the bottom section and one on the top right.



Your creation is now complete. I hope you have enjoyed these instructions.