

JND418 & JND419 & Craft Artist Fusion Inks – Split Trees, 2023 Deer Scenes & Fusion – by John Lockwood



Instructions by June Smith



John has created a 'You Tube Video' dated 27th September 2023, using JND418 & JND419 & Craft Artist Fusion Inks – Split Trees, 2023 Deer Scenes & Fusion, where he demonstrates how to make this atmospheric yet simple card using the gold fusion inks to make a beautiful background with the Split Trees and 2023 Deer Scenes. I would advise that you visit it as well as following these instructions.

June's Tips: This applies to any die, place your pieces onto your cutting plate at an angle, this helps to cut the dies in one pass. Also use your glue eraser to remove any unwanted marks.

Information:

If you keep a separate dauber sponge pad for each colour of the Gold & Pearl Fusion ink pads and just remove them and change to another colour sponge pad, you will find that you do not mess up or contaminate them with a different colour, we see John doing this all the time, and it is a good tip to stick too.

The new Deer Scenes 2023 die set is brand new for this year, you get a square notched die, then a die which has a stag and a deer standing on a hill. Also 5 different small individual deer dies and 2 shaped long hill pieces which can be used as different heights of hills for the deer to be grazing on. These will all work additionally alongside previous deer scene dies, or just using the lines to add little trees in the background.

Materials

7" x 7" White Top Folding Card Black

JND418 Split Trees (2)

JND419 Deer Scenes 2023 (9)

Smooth White Stamping Card

CA Black Card

CA Essential White Card

Gold Fusion Inks – Passionfruit, Blueberry, Azure & Lemon (with individual sponge pads).

A5 or above, Die Cutting Machine

2mm Foam Tape

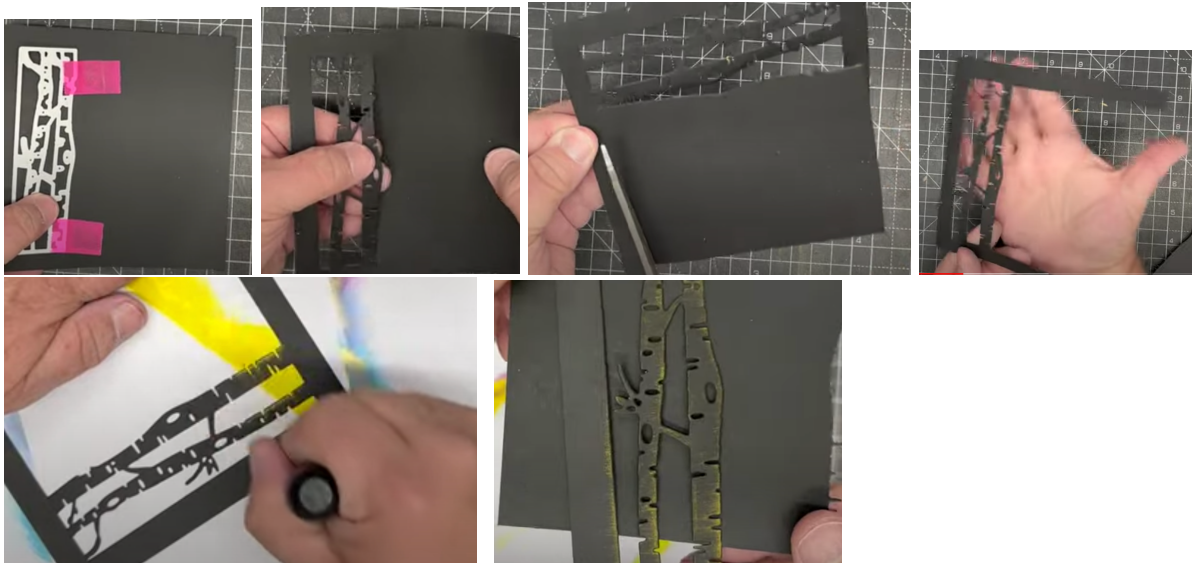
Craft Kit

Method:

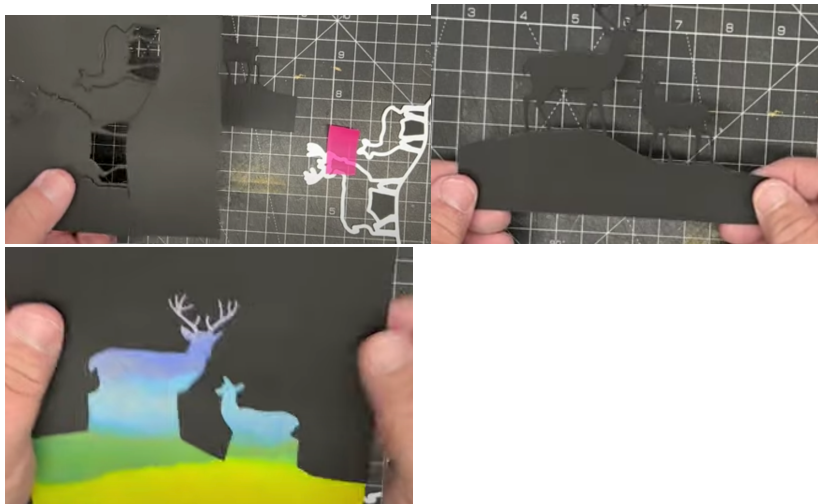
- Cut a piece of Smooth White Stamping Card to 5¼" x 5¼", as the frame we will make is 5½". John will use a piece of spare white card on the table so that it is easier for him to demonstrate what he will do, normally he would use the Multimedia Mat from The Art of Craft. Then using a dauber to pick up some of the Gold Fusion Passionfruit go around the top in a circular motion, I hope you can see the gorgeous gold colours coming through on the photos.
- Then take the blending circle off the holder and change to the Gold Blueberry and repeat the circular motions. We then repeat this time using the Azure underneath and you can see that gorgeous light blue colour showing through. Yes you have guessed it, we then take the Lemon, again with a new sponge pad and this time start from the bottom and merge it into the Azure and what you get is a gorgeous green coming through. When I first saw this I immediately thought it was a distant view of grass and trees, then in the middle a lake and finally the beautiful sunrise of different colours of sky. - what can you see when you make yours ?.



- Cut 2 pieces of Black card the same size as the stamping card so 5¼" x 5¼", put one piece to the side as we will use this shortly. Place the narrower split trees die on the left-hand side so that there is an even border on all 3 sides, tape it down with pink repositionable tape and run it through your A5 or above, die cutting machine. You can then see that it cuts on all 3 sides but leaves the right hand-side edge intact. For this card we will cut up from the edge to the cut line of the die with a pair of scissors.



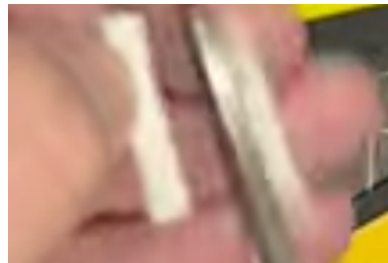
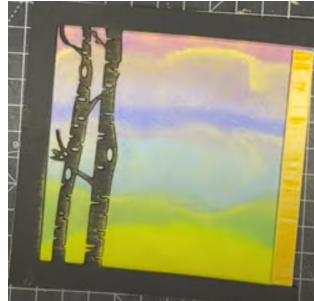
- Bring back in your card that you used for the fusion inks, place the black cut piece so that it looks like a 'U' shape, hold the top 2 pieces with your hand and simply pull down with the lemon dauber over the tree trunks, you think that there is nothing on them but if you place onto a spare piece of black card you can see that you have the lemon colour just edging the trees.
- Bring in the other piece of black card and position the 'Deer Scene' die in the centre of it and run through your die cutting machine. When it comes out you will see that just like the tree die it is still connected to the card, so take your scissors and snip off at the 2 edges – BUT don't throw the cutaway piece away because you could use that onto a similar gold fusion coloured piece of card as the basis for a silhouette card (see photo below), we will not be doing that today though.



- Take your deer piece and place it onto the white card you have used for the fusion, and repeat what you die for the trees, so hold the design down firmly, and starting from the top drag the lemon dauber down over both deer and ground, you get a lovely gold lemon effect shining on the deer and ground.



- We now need to put our card together, so starting with our base coloured piece which should now be dry. if it is not dry you could give it a quick blast with your heat gun and then spray over the top with a very cheap hair spray to seal in the gold colours.
- Turn the trees over so you are working on the back, add 2mm foam tape to all 3 solid sides, remove the yellow backing and add onto the background-coloured piece, don't worry if you have excess card hanging over because we will add a frame it to later. Then add a strip of the 2mm foam tape onto the front so that it is even on all 4 sides.
- Bring in the black deer piece and add a strip of 2mm foam tape to the back edge of both sides, and along the bottom. Then we need to support both deer, so cut a piece of foam tape about 2" long, fold it over onto itself so you have a 4mm piece, turn it around and cut up the long way so you end up with 2 narrow strips, place one on the body of the small deer, and the other piece on the larger deer's neck, this will support them on the card.
- Then you can peel off all the backing pieces including the one on the background square and add this onto the front of your card. You can see then how they are standing proud.



- We then need to add another strip of foam tape around the left, top and right-hand side of the card, this way you will be supporting it even more. You could if you wanted to add some of the CA dew drops onto the background, or some snow and add some acetate onto the front and make it into a shaker card, - but we will not do that for this card.

- We now need to make our frame, so take a piece of Essential white card and cut this to 5½” x 5½” and place the square die from the set evenly all the way round onto the front, tape it down and run through your die cutting machine.



- Add 2mm foam tape to the back, remove the yellow backing, add a few dabs of wet glue to stop the static, and add this onto the deer scene. If you have any bits sticking out from the back, take your scissors and at an angle trim these pieces off.
- Cut a piece of black card 6” x 6”, and a white piece to 5⅞” x 5⅞”, using wet glue layer these up onto your 7” Top Folding Card blank.
- Finally add wet glue to the back of the deer scene and add onto your card front.



Your creation is now complete. I hope you have enjoyed these instructions.