

JND445 Tempus Fugit – Working Clock - by John Lockwood



Instructions by June Smith:

John has created a 'You Tube Video' dated 9th June 2024, showing how to make a working clock using the JND445 Tempus Fugit Die set, which is Latin for Time Flies. If you go to the description under the name of the You Tube Video there are 4 links where you can purchase all the material you will need. I would advise that you visit it as well as following these instructions.

The first thing to do is to take your clock mechanism and pop a battery into the back to make sure it is working; you can see the middle piece turning round. Remove the battery and put to one side for later.

Information:

- Die 1 – 6” Outside Big Ben Style with corner patterns and a circle of tiny squares.
- Die 2 – Plain 5¼” Circle Die
- Die 3 – Clock Roman Numeral Circle
- Die 4 – Plain Inside Cutting Circle
- Die 5 – Smaller Circle of Tiny Squares
- Die 6 – Plain Smaller Circle Die
- Die 7 – Stunning Centre Piece
- Die 8 – Circle Stopper
- Die 9 – Minute Hand
- Die 10 - Hour Hand

Materials

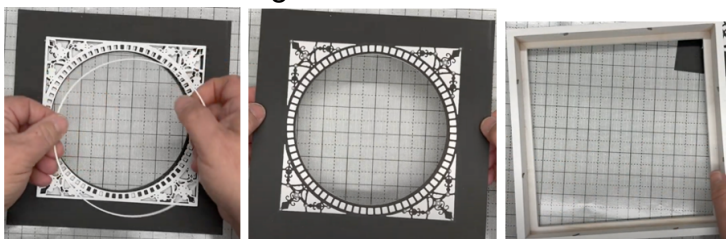
- 8” x 8” (20cm x 20cm) Deep White Box Frame (Hobbycraft).
- JND445 Tempus Fugit Die Set (10)
- JND483 Argyle Embossing Folder and Stencil set
- JND441 Scarlet Flower Plate
- Essential Black Card – 250gsm
- Essential Coconut White Card – 250gsm
- Silver Waterfall Card
- Black Vellum 250gsm or Black card
- Pearl Fusion – Ice White

A4 Die Cutting Machine
 3M Permanent Spray Adhesive Display Mount
 CA Black & White Pearls various sizes
 Glue Glaze
 5mm Foam Tape
 Craft Kit

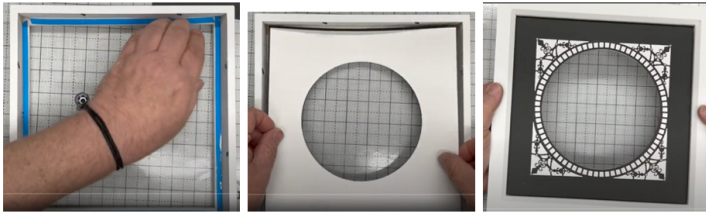


Method:

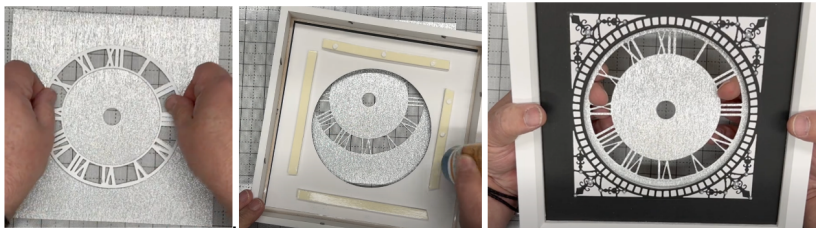
- Cut a piece of Black card to 8¼” x 8¼”, add dies 1 & 2 together into the centre, tape them down and run this through your die cutting machine.
- Cut a piece of Coconut White card to 8¼” x 8¼”, place this behind the black piece so you can see the texture of the card, make sure it is even all the way around, take a pencil and draw around the circle. Then just using the white piece add the circle die no. 2, inside the pencil circle and cut this out. Use spray glue onto the back of the black card and add onto the white making sure the circle and outside of both pieces are even all the way around. Don't worry if there is a little bit of overhang around the outside edges just as long as the circle is central, if you have any overhang just use your scissors at an angle to trim it off
- Bring in your frame, bend the metal strips out so they are straight, you can then take this out, also the white inner frame and glass, you can use the glass for something else.



- This next bit is really very important - using 6mm Blue Powertape add this along the inside of the ledge right up to the corner, trim off the edge and repeat on all 4 sides. Then remove all the blue backing pieces and turn your black and white clock over so that the front will go onto the sticky tape and press it down.
- We are then going to add our mechanism, it is easier to do this 'in situ' (inside the frame) rather than do it on your table and then try to add the whole thing inside the frame afterwards. We are going to need 5mm foam tape, if you don't have 5mm use 3mm & 2mm together to double it up, or the equivalent.



- Cut a piece of Silver Waterfall Card to 7½” x 7½”, we are going to cut out the stopper circle die no 8 as well as die no. 3 ‘Clock Roman Numeral Circle in the centre so that 12 o’clock (XII) is at the top and die cut the clock face evenly. **June’s tip:** Turn your Waterfall card over, position a ruler from the top left corner to bottom right corner and add a pencil line roughly in the middle. Then repeat this from the other opposite corners, use your pocky tool to make a small hole in the centre of the pencil cross. You can then turn the Waterfall card over, line this up on your grid board and add the small circle stopper die no 8 evenly in the centre, tape it down. Tape down die no 3 the ‘Clock Roman Numeral Circle’ in the centre (remember X11 is 12) and run through your die cutting machine.
- Remove the yellow backing from the 5mm foam tape, add a few dabs of the CA Super Tacky Glue along the foam, this not only stops the static. Position your clock face down inside the box, carefully turn the box over and use your fingers to get the clock face in exactly the right place, so it is even all the way around. Press this down firmly. If you don’t add the wet glue onto the foam it is highly likely that you will not get your clock straight.



- We will now make the back panel by embossing a 5¾” x 5¾” piece of black vellum or black card with the new JND Argyle Embossing Folder, then add one of the stencils over the top and lightly go over it with a dauber of Pearl Ice White Fusion. I think this makes it look like velvet, very clever.
- Then add another strip of 5mm foam tape around all 4 sides on the front of the design. Take a pair of scissors and cut a 1½”, square in the middle, you will not see this because it will be hidden - remove the yellow backing and again add a few dabs of wet glue, then add face down inside your clock.



Clock Mechanism:

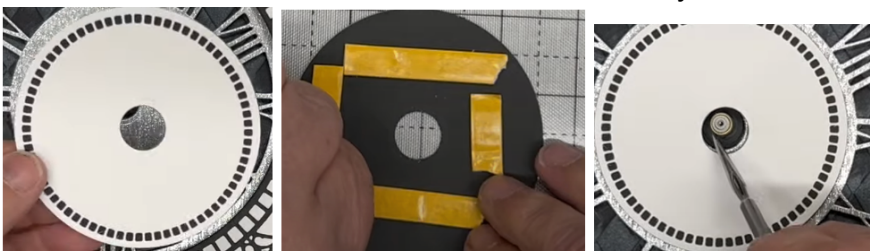
- Lay out your clock mechanism onto your table top, you should have the square box for the battery, washer, bolt also a set of hour, minute & second

hands. As a test we will position the battery mechanism through the hole then turn it over and place your back panel onto it without folding the metal stabilizers down – the reason you are doing this is to determine the depth in between to see if you need to add 5mm foam tape to the mechanism or blue powertape, it is your choice.

- Take your 5mm foam tape (or blue powertape) and add some around the 4 sides of the back of the battery pack. Make sure your box frame is square on your table, remove the yellow backing, add a few dabs of wet glue and add the mechanism with the battery chamber at the bottom, through the hole keeping it square, turn it over and make sure that the mechanism for the hands is in the centre, press down from the back.



- Cut a scrap of Coconut white card to 4¼” x 4¼”, on the reverse place your ruler from the top left corner down to the bottom right and draw a line with your pencil then repeat from the top right down to bottom left. Take a pokey tool and make a hole in the middle cross. Then turn this over and tape down die no 6 The Plain Smaller Circle, in the middle over the hole you have just made. Then add dies 4 & 5 together evenly on the card, run this through your die cutting machine. Then repeat this with Black card but only using dies 4 and 6 together. Add wet glue to the back of the white and add onto the black, you should then see the black holes showing through all around the circle. Add 5mm foam tape on the back, remove the yellow backing, add a few dabs of wet glue to stop the static and allow for a little bit of wiggle room before lining up inside the circle with the roman numbers on it, don't worry about the middle circle being just a little bit out, John is pointing to this in the photo below, this will be hidden with this next layer.



- Cut die 6 out of black card. Then from white card cut dies 6 & 7 together. Using spray glue if you have it or wet glue on the back of the white and adhere this over the black circle. Leave it a minute or so to adhere and then place die no 8 the circle stopper in the centre and run this through your die cutting machine, keep the centre cut out as we will use this later. Add a little bit of foam tape on the back and add this onto the front of your clock evenly making sure that the compass points are towards the XII (12) and VI (6).



- Add your washer first, then the nut and screw this down in the middle. Then press the minute hand pointing to midnight into place, the hour hand and finally the second hand all point to the top making sure that none of the hands are touching each other. Sometimes you may have to just straighten the second hand because this may get slightly bent within the packaging.
- Then bring in your little patterned cut circle and because we want to stick this onto metal we can use a few dabs of glue glaze onto the gold metal bit on the seconds hand and adhere over the middle, just hold it in place for a second or two.
- Turn the clock over and pop a battery into the back, then turn your clock over to make sure it is still working, and the second hand goes all the way around, the reason for this is so that you know that the second hand is not catching on one of the other hands, if it is just gently straight or bend the minute hand down a bit so that the second hands goes over it. You can then use the wheel on the back of the mechanism to adjust the clock to the correct time. Unfortunately, I can't take a photo of the moving second hand.
- Turn the clock over and add the back panel into place making sure the hanging black metal piece is the right way up and press down the metal clips on the 4 sides. You don't need to add the back panel if you don't want to.
- We then need to add 5 small white pearls into each corner of the main die cut, if you look at the photo below you can just see them behind the flowers which we will make next.



- From the Silver Waterfall card cut out the Scarlett Flower panel die twice, there are 12 petals cut out from each panel – there is a separate video and instructions in the group to show you how to make them up. Basically, lay the flowers in size order onto your table. Take each flower and just pinch the sides up, then add glue glaze into the centre of the largest petal and offset onto the same size petal, see photo's above, repeat this for the other flowers, but not the 4 smallest ones we can still add a black pearl into the middle, but it is like half a flower or a small bud coming through. We will only be using 6 flowers in total – 3 in each corner, the remaining flowers can be used on a different project. Add glue glaze and a black pearl into the centre of each

flower. Before adhering the flowers onto the 2 corners, just place the 3 flowers you are going to use into position, then make sure when the second hand goes around that it doesn't catch on one of the flowers, if it does, you can take a pair of scissors and cut a little bit off the tip of the second hand, John did this in the video.

- Once you are happy add glue glaze to the back of each flower and add them into position.



Your Clock creation is now complete. I hope you have enjoyed these instructions.