

JND456 Circle Snowflake Frame - by John Lockwood

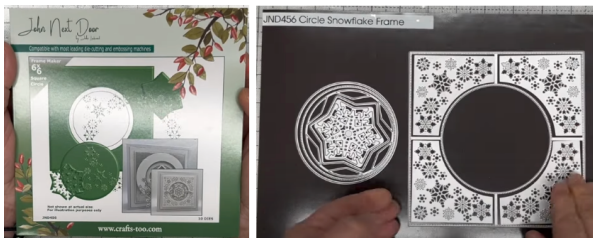


Instructions compiled by June Smith.

John has created a 'You Tube' video using JND456 – Circle Snowflake Frame, dated 10th July 2024, I have incorporated these in this set of Instructions. I would advise that you visit them as well as following these instructions through to the end before commencing the project.

Information:

This die works beautiful on its own but also works well with JND473 Holly Circle Frame it die set. There is also a Star die in the set which works well with JND457 Star Baubles die set. John has already made this card in Silver and White, and this is the picture that is on the front of the Packaging, today we will make a Gold version.



- Die 1) 6" x 6" Dotted Frame Maker die with cut out dotted circle in the middle
- Dies 2 – 5) Inset Snowflake 4 panels
- Die 6) Plain Circle
- Die 7) Matching Dotted Circle
- Die 8) Hanging Snowflake Section
- Die 9) Outer Snowflake die
- Die 10) Centre Snowflake die

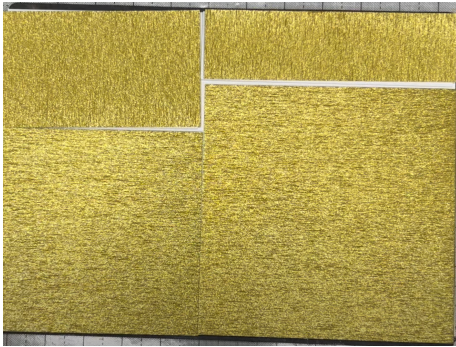
Materials:

- 8" x 8" Top Folding white Card Blank
- JND456 Circle Snowflake Frame (10)
- JND473 Holly Circle Frame It (6)
- Essential Coconut White Card
- Gold Waterfall Glitter Card

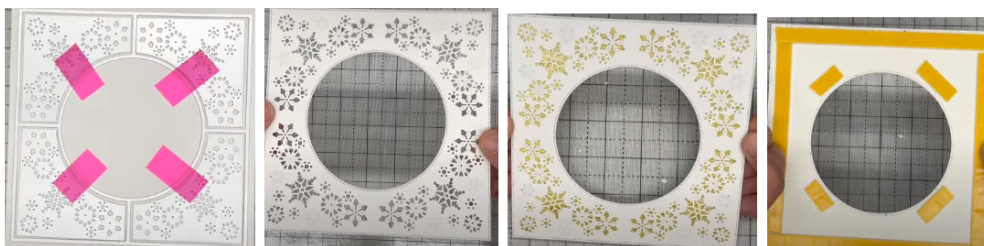
A4 Die Cutting Machine
CA White Pearls
Craft Kit

Method:

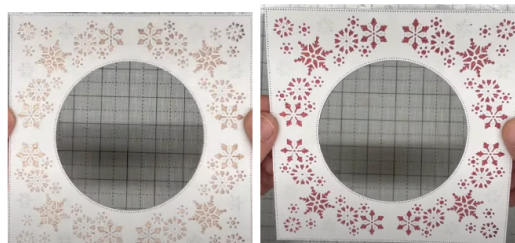
- Take a piece of Gold Waterfall Card and cut down at 6½", then from that piece cut off at 6½".
- Then from the remaining piece turn this longways on your guillotine or trimmer and cut down at 5¼" turn it and cut again at 5¼". You then have both of the Gold Waterfall square panels we need.
- Repeat this again but this time using an A4 sheet of Coconut White card.



- Take the Coconut White card you cut to 6½" x 6½", tape onto this die no 1, which is the main frame die, and also tape down evenly dies 2-5 which are the 4-quarter snowflake dies. Then run these through your die cutting machine, as there is a lot of detail in these dies you may need to add some extra pressure like a metal cutting plate or another piece of scrap card, you all know your own die cutting machines. Check on the back that all has been cut out, if not rotate it 90 degrees and run through again, this is quite normal when you have a lot of detail in any die. When it is cut out use your pokey tool to just pop out any little tiny pieces that may still be in there. Adhere both of these pieces together to give you a perfect Snowflake Frame, add foam tape onto the back, not forgetting 4 smaller pieces near the inner circle, put this to one side.



Here it is done in Rose Gold and Red.

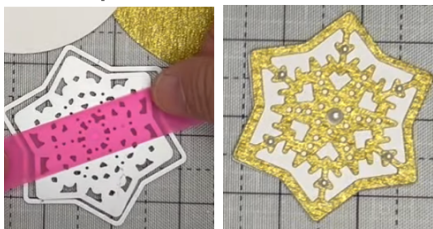


- Take your 5¼ x 5¼ piece of Coconut White and add on the 4 inside corner dies which have all been taped together, tape them onto the card and run them through your die cutting machine, don't worry it will overhang a bit and it doesn't matter, it is far cheaper to do it this way. Rotate it and run through again. Bring in the 5¼ x 5¼ piece of Gold Waterfall card, make sure all the pieces are poked out of the White square and adhere onto the Gold.
- Bring back in your top layer, remove the yellow backing and adhere this over the square frame making sure that the snowflakes in the background are even all the way around.
- Cut a piece of Gold Waterfall Card to 7½" x 7½" add this onto your top folding card blank. Then cut a piece of Coconut White to 7⅜" x 7⅜" and add this onto the top.
- Turn the piece over and add wet glue onto the back and adhere this evenly onto your prepared card base.



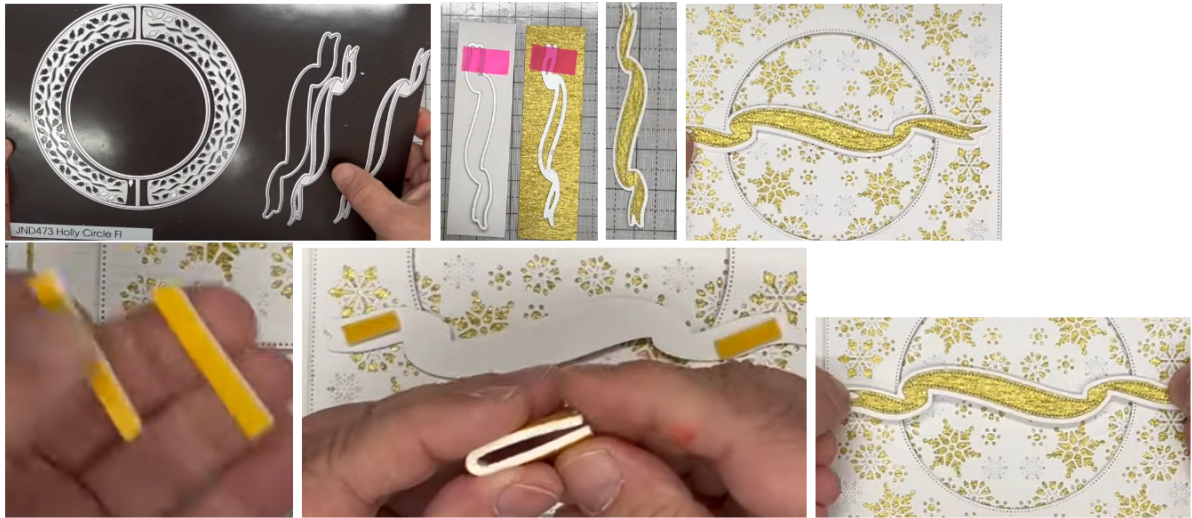
Centre Panels:

- You should have a Coconut White & Gold Waterfall circle piece remaining, we can now use these to work on our centre piece. Take a long piece of removable tape and pick up die 9, hover over die 8 until they are even all the way round, pick them up and tape down onto the Gold circle, run this through your die cutting machine. Then using the outer die no 8 only, cut that out of the White circle. Glue these together and decorate them with some White pearls..



- Then we are going to use the 2 strips that are left over. Bring in the 2 strip dies from the JND473 Holly Circle Frame It die set. Tape down the fine dotted die onto the Gold Waterfall card, and the outer cutting die from the White card. Adhere these together to give you this lovely strip, see photo below.
- If we wanted too we could then add some peel offs or something that will be coming out shortly to go across the middle, or you could hang some small baubles from it, why not play yourself and see what you come up with.
- John wants this piece to stand proud so turn it over and again using 2mm foam tape, cut a small piece off and cut it down the middle, then add a piece at either end of the banner, then cut another piece and this time fold it over

onto itself to double it over and add this across the middle, there is a handy line that is pressed in from the die to help you add it to the centre.



- Then take the circular star piece you made earlier and add foam tape onto the back, remove the yellow backing and add this across the centre of the banner.
- Finally take some more of the CA Self Adhesive White Pearls and decorate the centre of the snowflakes, as you can see on this Silver version.



Your card is then complete, I hope you have enjoyed these instructions.