

## JND473 - Holly Circle Frame It – 10 July 2024 - by John Lockwood



Instructions compiled by June Smith.

John has created a 'You Tube' video using JND473 Holly Circle Frame It, dated 10<sup>th</sup> July 2024, I have incorporated these in this set of Instructions. I would advise that you visit them as well as following these instructions through to the end before commencing the project.

### Information:



- Die 1 – This is a perfect 1” Double Circle die
- Die 2 – The left-hand Holly, Berry & Ribbon Half Circle
- Die 3 – The right-hand Holly, Berry & Ribbon Half Circle
- Die 4 – Outer Ribbon Strip
- Die 5 – Inner Dotted Ribbon Strip

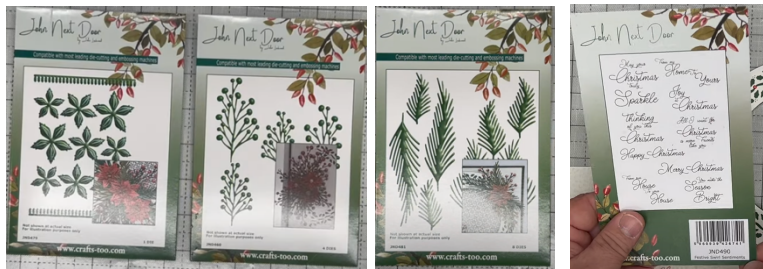
Here is a card made using these dies, you can see the perfect Holly circle and the Ribbon Thread.



The 9 stamps are made from Clear Polymer here in the UK:

May your Christmas Truly Sparkle

From my Home to Yours  
Joy at Christmas  
Thinking of you this Christmas  
All I want for Christmas is more Friends like You.  
Happy Christmas  
Merry Christmas  
From our House to your House  
You make the Season Bright



### Materials:

8" x 8" Top Folding card blank  
JND473 – Holly Circle Frame It (5)  
JND481 - Sweeping Boughs (8)  
JND479 - Frost Flower Plate  
JND460 - Hawthorne (4)  
JND490 Festive Swirl Sentiments (9)  
Snow Embossing Folder  
Essential Coconut White card  
Essential Christmas Green card  
Essential Chocolate Brown card  
Press to Impress Stamping Platform  
Red Ink Pad e.g. VersaFine Glamorous Red, or Tulip Red  
CA Red Pearl Dimension  
CA Silver Laser Glitter  
Clear Dew Drops  
6mm Blue Powertape  
A4 Die Cutting Machine  
Craft Kit

### Preparation:

John has already got some left-over pieces from his stash which he has used to decorate this card. There are Instructions within the group, as well as You Tube Videos for you to read and watch. They are as follows:

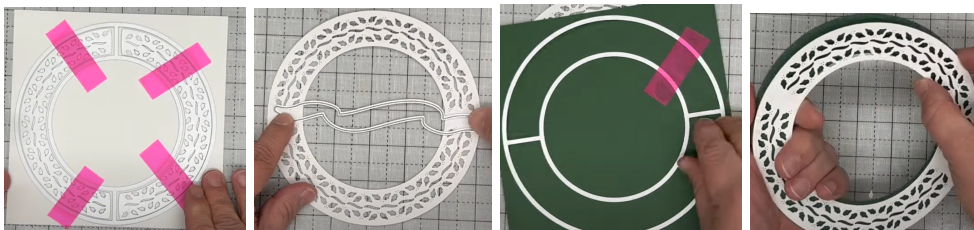
**Christmas Green - Sweeping Boughs**, some plain and some with CA Silver Laser Glitter stuck on them using Glue Glaze.

**Chocolate Brown - Hawthorn** with Red Pearl Dimension on the ends, these need to be left overnight to fully dry.

**Christmas Red - Frost Flowers** 5 in total with clear dew drops in the middle of the smallest 2.

## Method:

- Cut a piece of Coconut White card to 6½" x 6½", bring in the circle die, and the 2-half circle Holly dies and tape them down evenly inside the circle, always cut the 3 dies together. Many die cutting machine Manufacturers tell you to always cut the main die first and then the inserts, this is not necessary with the JND dies as these are made to such a high quality you are able to cut them together, it is also a nightmare to get them evenly lined up if you cut them separately. When you get the die cut you can see that there is a space on each side which is perfect for placing your die cut ribbon strips across it.
- Then take a piece of the Christmas Green to 6½" x 6½", tape down the circle die and die cut it. When you place it behind the White circle you can see that it fits perfectly no matter where you turn the frames around. Using spray glue or glue glaze add the white onto the green.



- Using the Red Pearl Dimension add a drop in between the little ribbon pieces that are between the Holly. As I said above these really do need to be left overnight to dry, so John tends to do a few of these and leaves them overnight, so then he can put the card together the next day. You could also cut out half a dozen of them, add the green behind and then add the red pearl dimension then you have them ready for the next card you want to make. You could also just add some small red pearls on there.



- Cut a 6" x 6" piece of Coconut White card and place this inside your Stamping Press. Take the 'May your Christmas Truly Sparkle' stamp and place this into the centre of your card, ink it up with a red ink pad. Then run this through a 'Snow' embossing folder.
- Add 2mm foam tape onto the back of the Holly Circle and adhere this over the sentiment so that the 2 white handle pieces on the wreath are in opposite corners. Then take your scissors and tilt them so you can under-cut off the 4 corner excess pieces.
- Cut a piece of Coconut White card to 7" x 7" a Christmas Green at 7⅛" x 7⅛", and a Chocolate Brown Mat at 7¼" x 7¼" and layer these up onto your top

folding card blank. Add glue onto the back of the circle and add onto the front of your card.



- Bring in the foliage that you made earlier and decorate the front of the card. On the back of the Sweeping Boughs add wet glue down the middle of them and add 3 of these on the bottom left, making sure that they are the opposite, remember you have a left and right for each of the sizes. Then add 2 on the top right.
- You can then add wet glue to the back of the Hawthorn again down the centre of each one and add these onto the Boughs. Finally adding the Frost Flowers, see picture below.



Your card is now complete, I hope you have enjoyed these instructions.