

## 2-JND464 Village Scenes & JND464 6" Diorama - by John Lockwood

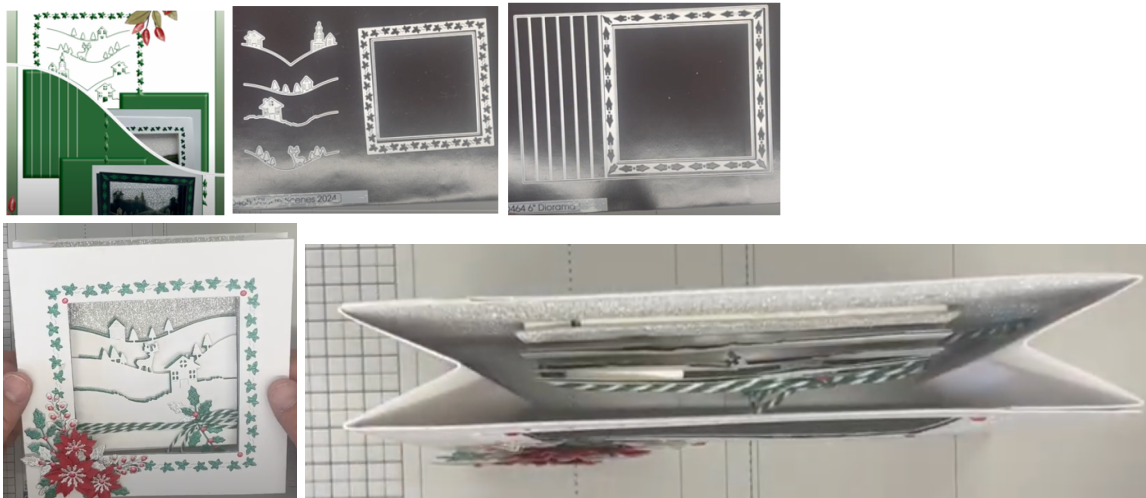


Instructions compiled by June Smith.

John has created a 'You Tube' video using the above-mentioned dies, dated 31<sup>st</sup> July 2024, I have incorporated these in this set of Instructions. I would advise that you visit them as well as following these instructions through to the end before commencing the project.

### Information:

Here are the dies used and a picture of the front and top view of the Diorama card John is making today.



### Materials:

JND465 Village Scenes 2024 Die Set (6)

JND464 6" Diorama Die Set (3)

Essential Coconut White Card

CA Green Waterfall Card

CA Silver Waterfall Card

CA Bakers Twine

9mm Blue Powertape

A4 Die Cutting Machine

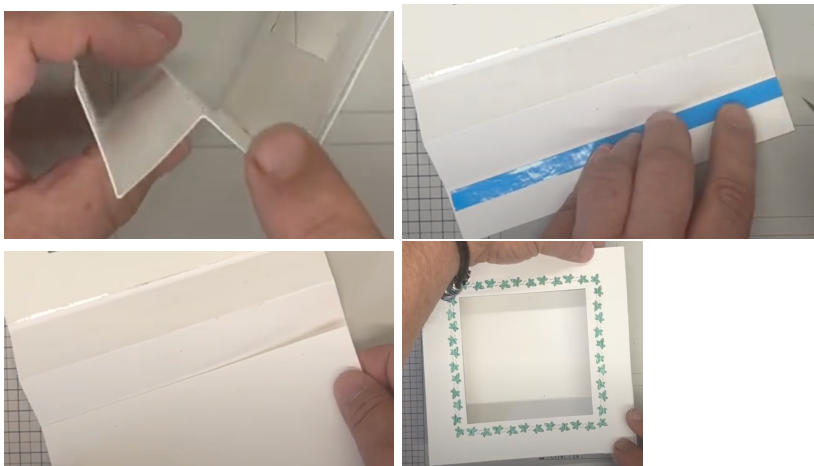
Craft Kit

## Method:

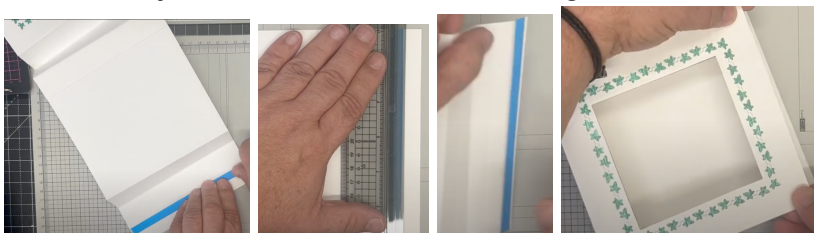
- Take your main Diorama main die, the Ivy Square Panel and Square cutting die and secure these evenly onto your Coconut White card with pink removable tape, run through your die cutting machine. Then cut just the Diorama main die on its own from another A4 piece of Coconut white card you will only see the score lines on this piece, put this to one side.
- Cut a piece of CA Green Waterfall card to  $5\frac{7}{8}$ " x  $5\frac{7}{8}$ " adhere this onto the back of the front cut piece, then add the square die from the set tape that down into the middle and run that through your die cutting machine.



- We then need to fold the end of the panel, but this time we will fold over 2 panels at a time making a valley, mountain, valley as the fold lines, see photo below. Take the other piece and fold the folds on this the same way.
- Bring in the first panels with the cut out on it and add a piece of 9mm blue powertape onto the edge of the seam end folded panel (see photo), remove the blue backing and add the long end of the other piece onto it. Then if you fold it all over and just hold the unstuck end into place you will see from the square photo below what it will look like.

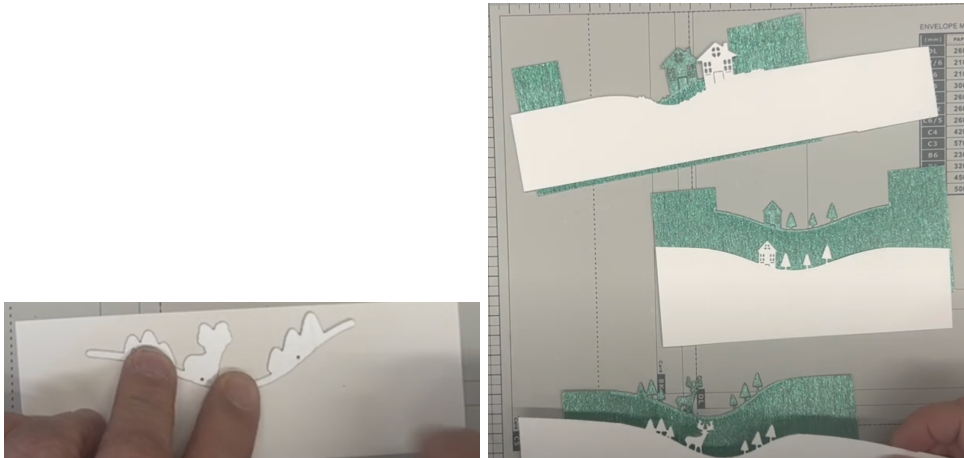


- Open the panel up again and on the outside end of the back panel add another strip of 9mm blue powertape down the seam fold at the end. Bring in your cutter and cut off the very end line, not the bit that has the blue tape on it and just fold it over to see how it goes, we will not remove the blue tape yet.

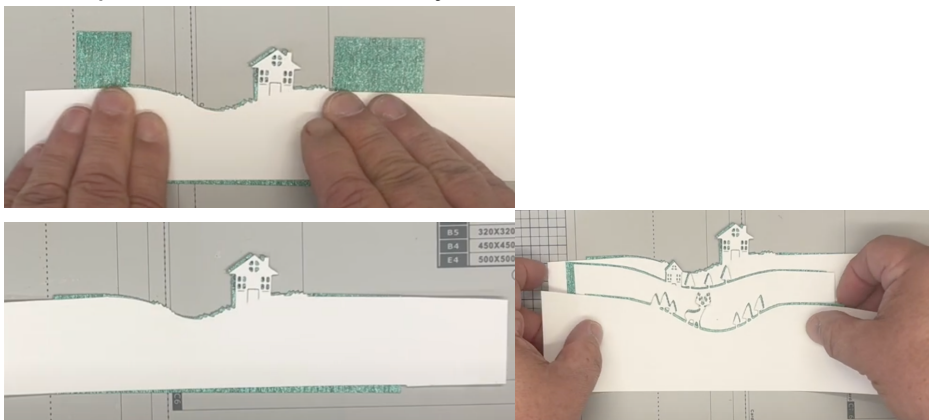


We will now work on our centre panel:

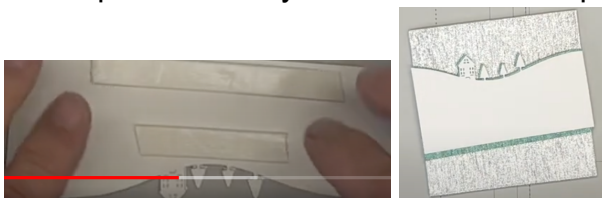
- Take some of your scraps of White and Green Waterfall, you will need 3 of each, if you look at the 2<sup>nd</sup> photo below which shows the sizes of each of the white and green pieces and the relevant die that was used for each of them, this may help you.



- We now need to trim them to size. Add wet glue onto the back of the white house panel and off-set this slightly over the green and press down, then take your scissors and trim off the green pieces that are sticking up. Repeat this process on the other 2, you can then see all 3 of them in the photo below.



- Using the inside square die again this time cut out a square of the Waterfall Silver Card. We are then going to start using our foam tape, to layer these up. Take the house with the 3 trees on it and on the back add a strip of foam tape on the bottom edge of the card and also just below the house and trees, remove the yellow backing and add along the middle of the Silver waterfall piece. Take your scissors and snip off the overhanging side pieces.



- Next we will use the deer scenes, add tape on the bottom and also another bit around the hill, if you remove the yellow backing before you add this curved bit it will curve much easier – we are going to add this just below the other one but you may notice that at the very bottom there is a little gap so add a bit of

foam tape onto the silver waterfall bit to even it up. Remove the yellow coverings and add this just below the house piece, cut off the ends either side. You have guessed it we then repeat this process for the final piece and add this onto the bottom, cutting off the edges. Add foam tape onto the back of this square.



- Bring in some Bakers Twine, reveal the foam tape down the sides on the back and add one end of the twine onto the sticky foam, then wind it around the card 3 times securing the end on the back of the card, cut off the twine. Then turn the card over and thread the twine underneath the middle of the twine, tie a knot into it, then on the one end tie a knot into it to stop it coming undone, cut the other end off and repeat the knot on the end. Remove the yellow backing.



- Bring back in the Diorama, open it up and remove the blue powertape from the end of the back panel, then bring over the other side and adhere together. into place evenly. Give it a press down to make sure it folds completely flat. Then take your time to get this right, bring in the square main panel and feed it into the top and guide it into position in the middle of the back panel.



- Cut some piece from the Box kit including a silver waterfall holly sprig, add wet glue onto the back and adhere in the left-hand corner. A green waterfall holly sprig which you cut in half and add one pointing towards the left corner and sitting on the silver waterfall sprig, then add wet glue to the other green sprig and this time add this over the knot on the Bakers Twine.



- A silver Hawthorn from the box kit which has white pearl dimension onto the ends. A small flower again from the box kit added onto the join in the Bakers Twine. A large red flower and 2 small red flowers onto the bottom left Ivy.
- If you have any more foliage you can keep adding this until you are happy with the design.



The card on the left was made previously, and the one on the right we have made today.



Your box is not complete, I hope you have enjoyed these instructions.