

CCL – Scoring & Box Kit – 2 August 2024 - by John Lockwood



Instructions by June Smith

John has created a 'You Tube Video' dated 2nd August 2024, using the new Crafts Too – 2 in 1 Scoreboard & Tool Kit, as well as a sneak peek at the new Christmas Box kit 2024, where he demonstrates how to make envelopes and cards. I would advise that you visit it as well as following these instructions.

June's Top Tip:

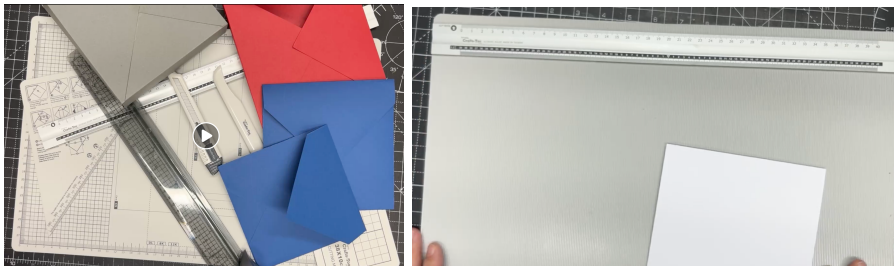
This 'Helix Pricing in Proportion Guide', or something similar is so useful and can be purchased from any Post Office or stationery suppliers as well as on the internet, some costing only a few pounds. You just need to post your envelope/box through the slots so you don't have to force it, and it will tell you whether it is a standard or large letter, so you can add the relevant stamp on the front and post it, this is a very useful tool to have. A large letter is 2.5cm deep.



Going forward this table will be expanded; these are the most basic measurements.

Card Blank Size	Paper for Envelope	Scoring cm
4" x 4"	22cm x 22cm	12cm x 12cm
5" x 5"	25cm x 25cm	15cm x 15cm
6" x 6"	27cm x 27cm	17cm x 17cm
7" x 7"	30cm x 30cm	20cm x 20cm
8" x 8"	32cm x 32cm	32cm x 32cm
5" x 7"	24.5cm x 24.5cm	19.5cm, 14.5cm, 19.5cm & 14.5cm
Box Cards		
10mm wide x 2cm deep	27cm x 27cm	17cm x 21cm
10mm wide x 3cm deep	27cm x 27cm	17cm & 24cm
BOX		
Paper or Card		
6" x 6" Red Box Lid	8" x 8"	2.5cm x 2.5cm
Green Base	7 ³ / ₄ " x 7 ³ / ₄ "	2.5cm x 2.5cm

Information:



Materials

Various card stock

Crafts Too – 2 in 1 Scoreboard & Tool Kit

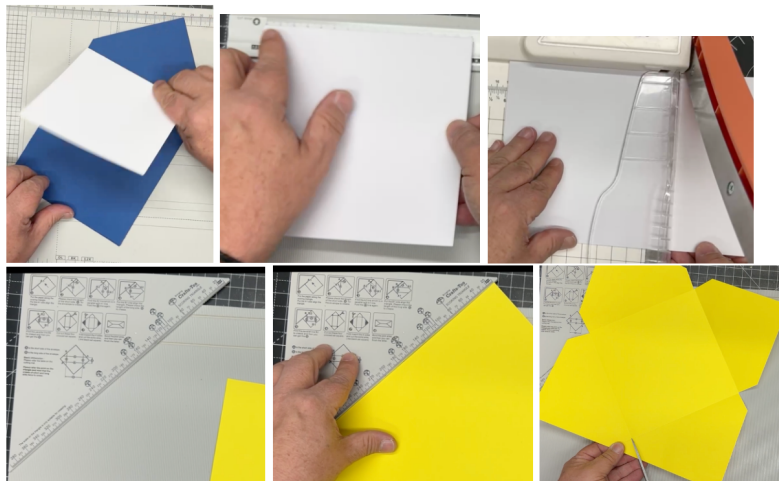
12" x 12" Crafts Too Guillotine

Craft Kit

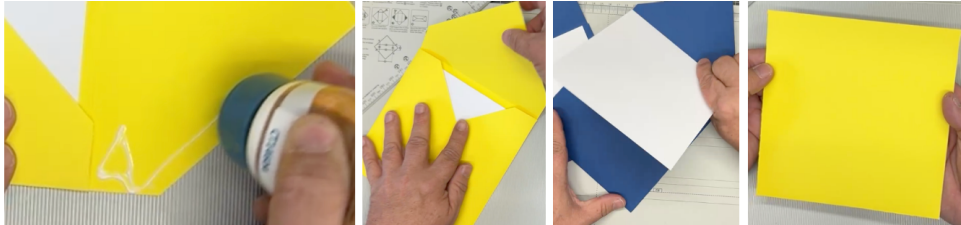
Method:

6" x 6" Envelope

- Place an A4 sheet of white card onto the scoreboard side of your 2 in 1, and score down the middle, John did this by eye, but you can do it exactly if you wish, we will be folding this in half and bring in your 12" Guillotine and cut this to an exact 6" card blank.
- Take the card you have made and measure it across the top of the rule. Go to the nearest centimetre which is 15cm to be safe add 2 cm on so this is 17cm across, you always then add 10cm for the paper, this is for any size card, so that makes it 27cm x 27cm, cut this from a 12" x 12" piece of thin card.
- Using the scoreboard side of your 2 in 1, add the corner envelope maker at the top, it will click into place on the scorelines. You can place this exactly even on the top left or you can move it up a little way as John has done in the photo, as long as the top left corner of your card is placed on the end line which is the beginning of the rule. Then using your score tool score down at 17cm (170), rotate and repeat, you do this 4 times in total.



- Then fold all the 4 sides over crease with your bone folder or similar, open them out and using your scalpel or good scissors cut off the 4 middle notches. Fold the 2 sides in then the bottom up and the top now, you have created your envelope for a 6" x 6" card blank. All you do then is to take a little bit of glue and add this half way up the sides and fold it over. Below you will see the yellow and blue ones.

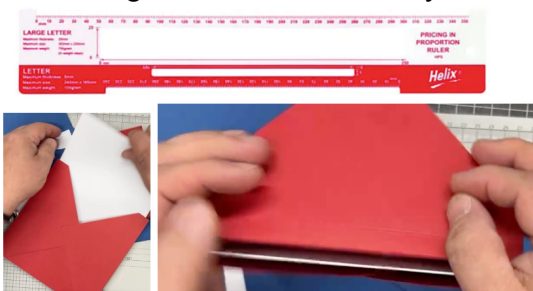


2cm Box Envelope

- For the box envelope we cut this to the same size as before so 27cm x 27cm. As this is a box envelope we would score at 17cm & 21cm, which is to create the sides of the box envelope, on all 4 sides. Again, reinforce all your 8 folds with a bonefolder or your fingers. With your scissors snip off the middle pieces.
- We then do exactly the same again of adding glue down the sides, fold them over and place your hand on the inside so you can stick them down pressing both hands together.



This red 6" x 6" Box Envelope, which has a 10mm depth so if you want flowers etc. on the front of your card then this is the box envelope for you. This will also go as a large letter, but always check this first with the 'Helix Pricing in Proportion Guide' or something similar, this is a very useful tool to have.



3cm Box Envelope

- For this Grey box envelope, we cut this to the same size as before so 27cm x 27cm. As this is a box envelope we would score at 17cm & 24cm, which is to create the sides of the box envelope, on all 4 sides. Again, reinforce all your

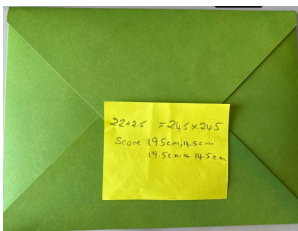
8 folds with a bonefolder or your fingers. With your scissors snip off the middle pieces.

- We then do exactly the same again of adding glue down the sides, fold them over and place your hand on the inside so you can stick them down pressing both hands together.



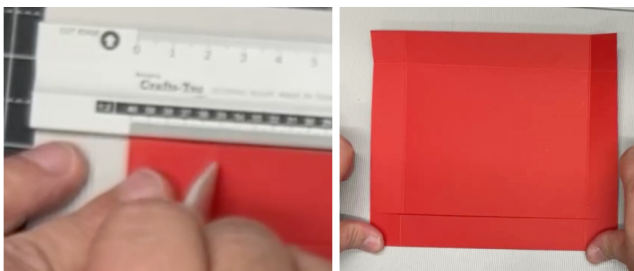
5" x 7" Envelope

- Bring in the white piece of folded card left over from making the 6" x 6" card. Cut this card down to 5" across x 7" long which is 13cm x nearly 18cm. To make the envelope cut a piece of paper/card to 24.5cm x 24.5cm. Then score down one side at 19.5cm, turn once and score 14.5cm, turn again and score at 19.5cm and finally once more at 14.5cm. Snip off the 4 middle pieces, fold the left and right over first, then the bottom up and finally the top down. Not sure if this is the same way John has done his.



6" x 6" Box and separate lid:

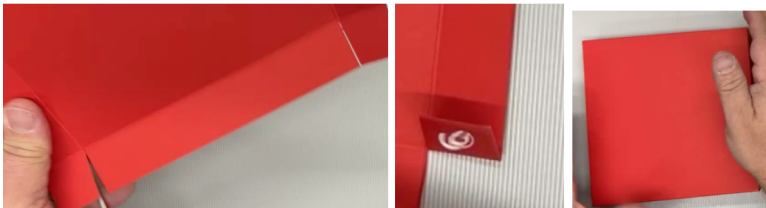
- John is using red card for the lid and green card for the base. Measure your card that you want to put into a box so let's say it is 6" x 6". The lid we need to cut a piece of card at 6" plus 1" for one side of the box and 1" for the other side = 8" x 8". We know that 1" is 2.5cm, so using the score board, score at 2.5cm down all 4 sides, if you wanted to use the black bottom ruler we know that 2.5cm is 35cm. Fold and burnish all the sides over.



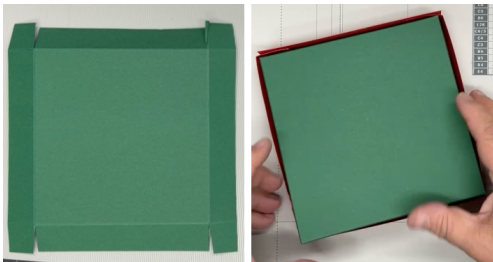
- Then take a sharp pair of scissors and cut a line up to the fold of one corner and then a small wedge out of that corner, see the picture below, then repeat this on the opposite corner. Turn the lid around and repeat on the other side. Then before you construct the lid take a half-moon punch, or sometimes called a wedge punch – Art of Craft has a nice 'Crafts Too' one, which is what I use all the time and about half way along one side cut the wedge out and then repeat on the opposite side, this way you can open the lid easily.

Another tip I would give is to decorate the top of your lid before you put the sides together this way you can press the lid down onto your desk when you want to add some embellishments or ribbons etc.

- Add a little bit of CA Super tacky wet glue onto the outside of each flap and fold over to create your lid, some people like to add a little peg onto these sides until they are stuck but with super tacky glue or powertape this is not necessary. The reason we take a little wedge out is that when you adhere the sides together you don't get a little wedge of card poking out of the top.

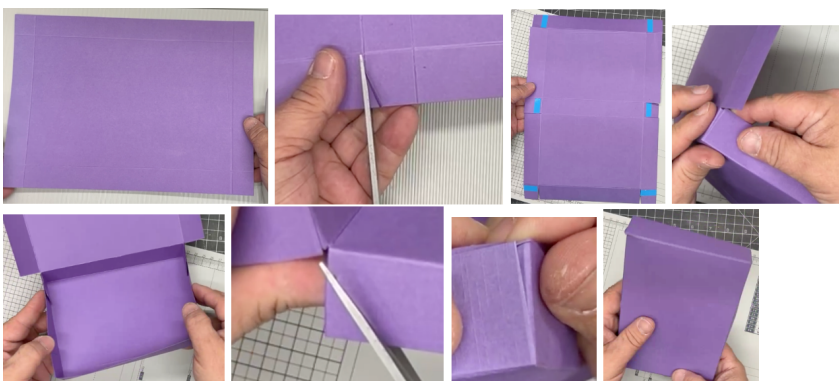


- For the green base cut this to 7³/₄" x 7³/₄" and repeat as above so scoring on all for sides at 35cm, crease the folds, cut the little wedge out, add wet glue and hold the corners until they are stuck, it doesn't take long at all because this is such good wet glue. You could use blue powertape if you prefer.



One piece box and Lid:

- Cut a piece of card 26cm, score down at 13cm and then at 8cm, cut the wedges out on the 4 outside corners. Then on the middle fold cut up either side on both of them. Add powertape on both of the middle tabs and also on the other 4 flaps. Reveal all of the powertape and fold the 2 middle tabs in first.



- Then use the half circle wedge punch to cut a half circle on the middle of the top fold (just like we did on the lid of the other box, this time you only need it once). Then when you fold the other 2 tabs on the lid don't stick it right up to the fold line just leave a little gap, this way you can fold the top lid over to close the box. If you wanted to you could just use your scissors or a punch to

round off the middle edges of the lid so it is not dead straight, it makes it look a lot nicer, but of course this is your choice.

- John is now going through the new Christmas 2024 Box Kit, this is available from some shops now but wait, if you get it from Create & Craft which is available now, you can buy the complete bundle which includes an exclusive Holly die only available from C&C, there are also 2 new die sets in the bundle.



- In the Magazine kit you get a 6" x 6" Stamp Set, some of you may notice that the stamped Frost Flower on there, is from when John did the drawing for the Frost Flower Die set which was released a month or so ago. There is a die set to compliment this stamp set from this year's Christmas range.



- The biggest frost flower stamp measure an inch, the die for this dose not cut out the petals of the flower seperately as it is not possible to do this. The oval dies will cut out the stamped ovals, you have 3 small flower centres and dies to match these will be useful for something else coming out soon, which you can see on the back of the Magazine.
- There is also a 5" Ivy embossing folder, can you see it below in silver mirror card, some of you may recognize this from a recent sample card John did.



- This is your exclusive die set it is 3 strips of Holly and 3 of Ivy. These will work with some more frame maker dies coming out very soon. Also available to purchase is the 6" Diorama die set and the Village Scene, both of which work with these. They also work with the 7" frame maker dies. There are 4 videos and sets of instructions already on the group using these dies.



- The papers in this Magazine are absolutely stunning, best I have ever seen, I can't show you all of them on here but trust me.



Your creations are now complete. I hope you have enjoyed these instructions.