

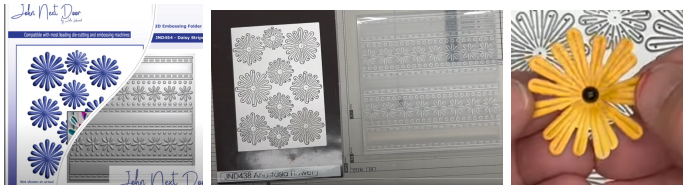
## JND438 & JND454 – Anastasia Flower Die & Daisy Stripe Embossing Folder - by John Lockwood



Instructions compiled by June Smith.

John has created a 'You Tube' video using the above-mentioned die and embossing folder, dated August 2024, I have incorporated these in this set of Instructions. I would advise that you visit them as well as following these instructions through to the end before commencing the project.

### Information:



If you look closely to the Anastasia plate you will see that each flower has a larger pointed petal and a smaller pointed petal something like a duo petal. It also has a slit in the middle of each petal, hopefully you can see this in the yellow flower above. They can be used for sunflowers, starburst etc.

### Materials:

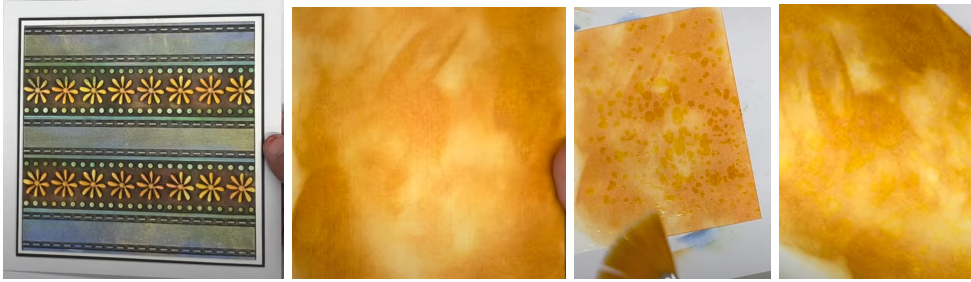
7" x 7" White Top folding Card Blank  
JND438 Anastasia Flower Die  
JND454 Daisy Stripe 6"x 6 Embossing Folder  
Coconut White Card  
Black Card  
Gold Fusion Inks – Blueberry, Kiwi and Sunfruit  
Matching separate blenders for above.  
Fan Brush  
VersaFine Onyx Black Ink Pad  
Versafine Smokey Grey Ink Pad  
CA Blue Moulding Mat and matching ball tool  
CA Black Pearls  
Stamp 'With Love'  
Die Cutting Machine  
Craft Kit

## Method:

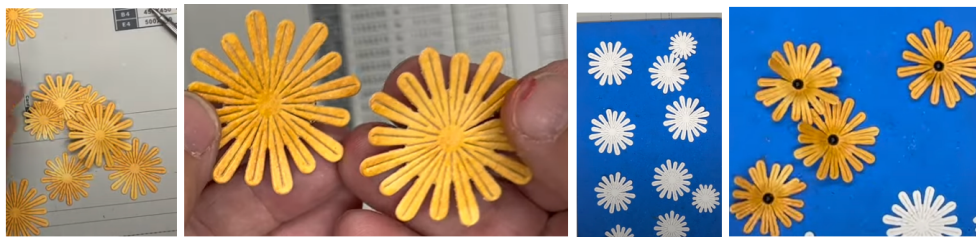
- Cut a piece of Coconut White card to  $5\frac{3}{4}$ " x  $5\frac{3}{4}$ " and emboss this with the Daisy Stripe embossing folder. We are then going to turn it over onto the debossed side and colour it. Using a separate blender for each colour pick up the Sunlight and colour down the right-hand flowers, you don't need to be precise and neat. Then add the Kiwi and add this up and down the dots either side of the flowers, finally using the Blueberry add down the centre panel and a little bit over on the right-hand panel. Turn your card around and repeat at the other end. Yes it doesn't look very neat, but wait until we add some VersaFine Onyx Black ink, and rub this over the top of the design over it



- We will now take either a full A4 sheet or cut it down to  $5\frac{3}{4}$ " wide piece of Coconut White card and using the same Fusion Sunfruit colour and separate daubers, cover the piece of card in a circular motion so as it looks cloudy, so not covering it completely, to give you lots of tones and shades. John is using a larger piece of card and just using half of it for speed, but it would be better if you covered the whole sheet and then you can cut out more flowers. Add a spray of water onto your board and using a fan brush pick up some of the water and flick it onto the colour, and it will begin to bleach and give it a lighter shade. You have 2 options; you can leave it to dry naturally or take a tissue and press this down over the piece to dry it. Trim your piece down to  $5\frac{3}{4}$ " x  $4\frac{1}{8}$ " (if you have used a full A4 sheet, you would cut it in half and then cut the 2 halves in half again to get 4 pieces that are  $5\frac{3}{4}$ " x  $4\frac{1}{8}$ " which is the ideal size for cutting the flower plates).
- Add the Anastasia plate onto the top of the card and tape it down, it is also a good idea to add a little bit of the pink tape on the top of the first bit and onto the cutting plate as well, so that the plate doesn't move, then because it is a detailed die add a metal shim onto the top, then your plate and run it forward and back through your die cutting machine. All die machines are different so use the layers that are appropriate for your machine.



- Look at the wonderful rich colour of different tones when you cut out the flowers. Bring in your blue moulding mat, which is a hard foam, so you don't need a soft foam for this. Lay the flowers face down onto the mat and using the ball tool press all the way around in the middle of each flower, so the side petals come up, then turn the over and using the same ball tool just scribble in the middle. Then add a CA Black Pearl into the middle of each flower.



- John has cut out a stitched square from the JND449 Square Band die set, stamp a 'With Love' stamp using the Versafine Smokey Grey Ink pad, added 2 pieces of foam tape on the back side by side, removed the yellow backing and added this into the centre of the card.
- Then add a small black pearl onto the centre of each of the flower on the 2 strips



- Bring in your card blank and add a 6 1/8" x 6 1/8" Black layer onto it, then a 6" x 6" White layer onto the black. Finally add wet glue to the back of your design and add this onto the top folding card blank.

