

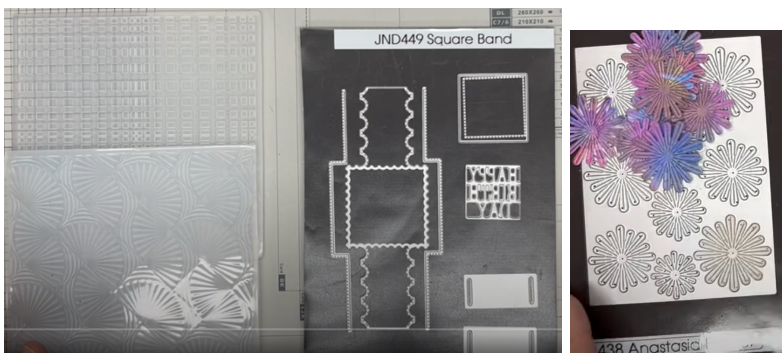
## JND449, JND452 & JND453, Square Band Die, Illusion Fan & Infinity Embossing Folders.- by John Lockwood



Instructions compiled by June Smith.

John has created a 'You Tube' video using the above-mentioned new Die and 2 new 3D Embossing Folders, dated August 2024, I have incorporated these in this set of Instructions. I would advise that you visit them as well as following these instructions through to the end before commencing the project.

### Information:

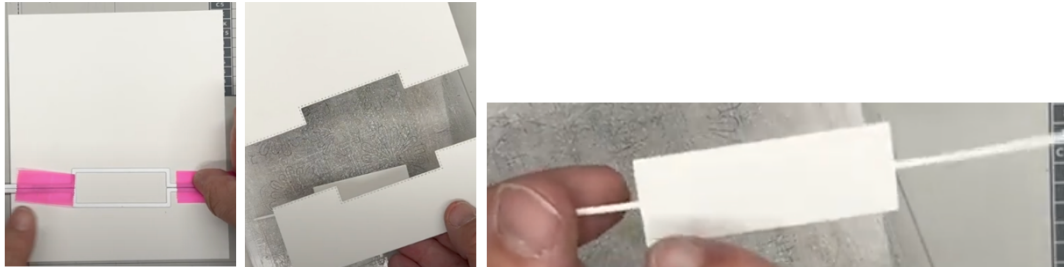


### Materials:

- 5½" x 7½" Pre made White Card Blank
- JND449 Square Band Die (8)
- JND438 Anastasia Flower
- JND452 Infinity 3D Embossing Folder
- JND453 Illusion Fan 3D Embossing Folder
- CA Coconut White Essential Card
- Gold Blueberry Fusion Ink with separate dauber
- Gold Dragonfruit Fusion Ink with separate dauber
- Gold Passion Fruit Fusion Ink with separate dauber
- Crafts Too Blue Flower Moulding Foam and matching Ball Tool
- CA Clear Dew Drops
- CA Glue Glaze
- CA Super Tacky Glue
- Die Cutting Machine
- Craft Kit

## Method:

- We will be using the 2 long stitched/dotted outside dies from the Square Band set and the 5<sup>3</sup>/<sub>4</sub>" square Illusion Fan 3d embossing Folder. Cut a piece of card to 5<sup>3</sup>/<sub>4</sub>" x 5", no this is not a mistake we just want the card a bit narrower than the EF. Add the 2 dies together and tape them down evenly at both ends and securely with your pink repositionable tape about 2/3rds of the way down the card, then cut this out. The wrap piece that cuts out can be used as a wrap, especially if you stamp a sentiment across the middle, so put to one side for another project.



- Open up your embossing folder so that the raised up side is at the bottom, add the 2 white cut pieces onto it, close the lid and run this through your machine. Put to one side whilst we bring in some colour.

**Tip:** you will need 2 pieces of Coconut white card cut to 5 x 7", one of these will be coloured as below, the other you need to colour all over with the same Fusion Inks and water splashes, the solid-coloured one will be used to cut out the Anastasia flowers and also a small square which will go behind the Happy Birthday square sentiment. The other you would need to prepare as follows:-

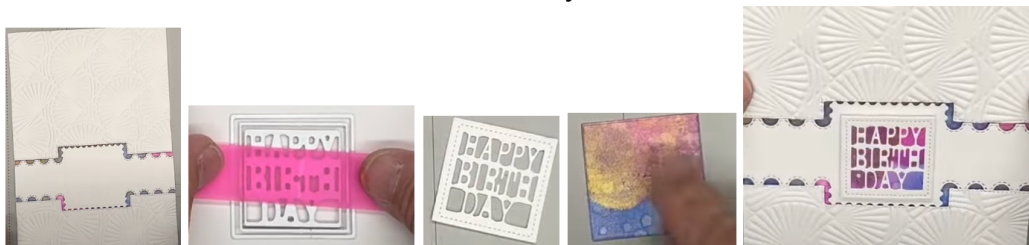
- Place a plain piece of card or paper onto your work surface and add a 5" x 7" piece of Coconut White card onto it. We will now bring in some colour, so using the Gold Blueberry, Dragon Fruit and Passion Fruit Fusion inks with a separate blender for each one, add a thick layer of the Passion Fruit in a circular random motion approximately a 1/3<sup>rd</sup> of the way down, then repeat with Dragon Fruit and finally Blueberry. You get that beautiful colour with the gold shine on it when it catches the light. We then want to give that a bit of reaction, so take your water spray and spray a bit onto your work surface, then take a fan brush pick up some water and flick the end of the brush over the colour, the colour will bleach where the water falls. It only takes about a minute to dry. John has already prepared another one which is dry.



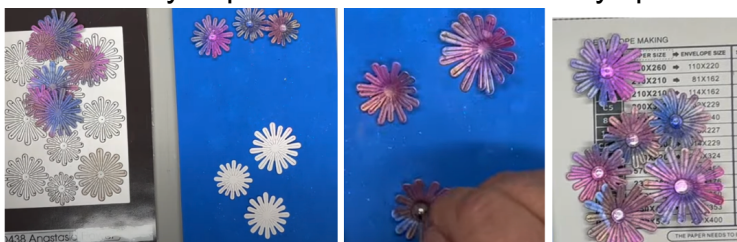
- Bring in your 2 embossed pieces and add 2mm foam tape on the back of both pieces, see photo, remove the yellow backing and add the two pieces onto your prepared card.



- Bring in another piece of Coconut white card and cut out the belly band die, you will see all the beautiful pattern edges on the top and bottom and a sort of postage stamp piece in the centre, very clever idea. On the back add more 2mm foam tape down the centre and on the 2 postage stamp edges, reveal the foam tape and add onto the front of your card, then turn it over and snip off the 2 overhang pieces each side.
- Take a scrap of the Coconut white card and bring in the small square, the dotted square and the happy birthday, take a long piece of removeable tape and using each end as handles pick up the Happy Birthday first and add it onto the dotted square then pick them up and onto the cutting die it is then easy to place these onto your cutting mat and die cut them out in one go, you know then that they are even all the way around. Use the outside cutting square to cut your inked piece. Spray glue the back of the white square and add onto the coloured square. Add 2 pieces of 2mm foam tape onto the back and adhere this onto the band of your card.



- Bring in your Anastasia Flower die plate and add this onto the solid Fusion inked piece then run through your die cutting machine. Then place them face down onto your moulding mat and using the ball tool that comes with it to just go around the centre of each flower to bring up the sides, then turn them over and squiggle or press down in the middle to shape them. Then bring in some of the CA clear Dew Drops, these even have a what looks like a little water bubble in each one and a flat side, so they look more realistic (these are so useful, The Art of Craft even do coloured ones as well). Add a dab of Glue glaze into the centre of each flower and add the clear dew drop into it, making sure you put the flat side down. Any spares can be use on another project.



- Add wet glue to the back of your design and add this onto your prepared 5½” x 7½” top folding White card blank. Then again using the wet glue add the Anastasia flowers onto the front of your card. Below is the original card on the right using the Infinity embossing folder, and this card you made today using the Illusion Fan embossing folder.



Your project is now complete, I hope you have enjoyed these instructions.