

JND467 Greeting Panels & JND469 Pinecones- by John Lockwood



Instructions compiled by June Smith.

John has created a 'You Tube' video using the new Greetings Panels & Pinecones die sets, dated 3rd October 2024, I have incorporated these into these Instructions. I would advise that you visit them as well as following these instructions through to the end before commencing the project.

Information:

There are 4 dies in this set:

Die 1 - A 5" x 7" Aspect Ratio Greetings Panel with no outside cutting edge

Die 2 – A 5" x 7" Outside Cutting die.

Die 3 – Half Circle top die with no outside cutting edge

Die 4 – Half Circle Cutting die.

There is a list on the group for all the sizes and numbers for all the Presscut dies, you can download this and print them out, then add this onto the die packet.

Further down the instructions you will see that we need to cut out the Hawthorn die from both the Chocolate and Tea card, then using the CA Pearl White Dimension add a small pearl on the ends. These are touch try within an hour but ideally they should be left to set for 24 hours. If this was me I would also prepare the Pinecones and let them dry – then we can add them at the end, and you will see the glitter in all its glory.



Materials:

7" x 7" Top Folding White Card Blank

JND467 – Greetings Panels (4)

JND455 – 5" x 7" Frame It die set (15)

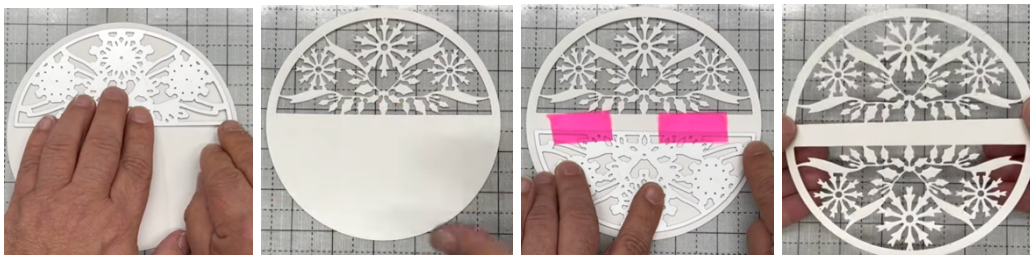
PCD206 – Circle Dies (31)

CA Essential Coconut White Card

CA Essential Tea Colour Card
 CA Essential Chocolate Colour Card
 Double Sided Adhesive Sheet
 CA White Laser Glitter
 CA Pearl White Dimension
 CA232 Glue Gel (out soon)
 CT23849 Tiny Blue Daubers
 Die Cutting Machine.
 2mm Foam Tape
 Craft Kit

Method:

- From the Presscut Plain Circles die set, use die no. 9 which is 6" circle and cut this out of Coconut White card.
- Then take the half circle detailed die from the Greetings Panel set and tape this down evenly at the top of the circle, run this through your die cutting machine. Then remove the die, turn it around and repeat so you have the mirror image of the pieces with an even edge to the circle all the way around.



- We then need to cut a 6¼" x 6¼" piece of double sided adhesive sheet, also a 6¼" x 6¼" piece of Tea card. Add the sticky sheet onto the Tea card and cut out from die no 10, which is a 5¾" x 5¾" circle. Then place the white circle face down on your silicone mat and add the Teal circle into the middle. If you don't have the silicone mat use the carrier sheet from sticky circle.
- Take a scrap piece of card and sprinkle the white laser glitter over the circle and spread it over with your fingers. You don't want to get the glitter on your silicone mat, if you do it would have to go through the dishwasher or hand clean it to remove all the glitter. John uses a cheap decorators brush to brush all the excess glitter off.



- Turn the circle over and add 3 strips of 2mm foam tape on the back. Then cut out circle die no. 8 (6¼") from the Chocolate card and die no. 7 (6½") from the

Tea card. Add wet glue to the back of the Tea circle and adhere onto the Chocolate circle, then add the glittered circle evenly onto it.

- Turn this over and add 3 more pieces of 2mm foam tape onto the back.
- Bring in your 7" x 7" top folding white card blank and add a layer of the Chocolate (6 $\frac{3}{4}$ " x 6 $\frac{3}{4}$ "), Tea (6 $\frac{5}{8}$ " x 6 $\frac{5}{8}$ ") and Coconut White (6 $\frac{1}{2}$ " x 6 $\frac{1}{2}$ ") square onto it. Add the Circle onto the centre of it. This is our base card completed, put to one side.



- We now need to work on the JND469 Pinecones. Bring in the premade Hawthorns and lay onto your work surface. Take the 4 Pinecones both solid and patterned die and cut out a set from Chocolate and Tea card, see photo below. Using glue glaze onto the back of the Tea patterned Pinecones and add onto the solid Chocolate Pinecones. Repeat for the others reversing the colours.



- Bring back in your card. We will be starting with the Chocolate Hawthorn so turn this over and using a few dabs of glue gaze onto the back, add this across the centre of the circle. Then repeat with the Tea Hawthorn adding it slightly offset so we get a symmetrical design across the centre.
- We then need to carefully shape each one of the Pinecones between your fingers so that the body of them are rounded. Then using one of the tiny blue daubers and 3D Glue Gel (The Gel is coming out very soon), add a dab of the gel onto the back of the pinecone and add 6 of them onto your card, arranging them as per the photo below. The remaining 2 pinecones we will use on another card. Make sure you puh some of the gel up over the top of the tube and you can then screw the top back on. You could use Pinflair.



- We then want to add a little dab of glue glaze down the side edges of the pinecones and bring back in your piece of paper you used earlier and sprinkle the of CA White Laser Glitter onto the pinecones – tap off the excess onto the card and the glitter will dry fully in a couple of minutes.



Your card is now complete, I hope you have enjoyed these instructions.