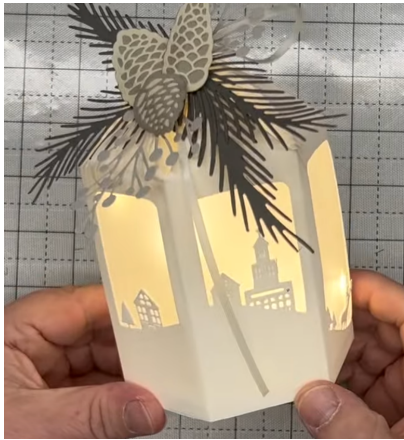


JND470 - Tall Lantern & JND472 Lantern Village Scenes- 3 November 2024 - by John Lockwood



Instructions by June Smith

These instructions are taken from John's You Tube video dated 4th November 2024, where you will be able to make the new Tall Lantern with lots of Village Scenes inside. I would advise that you visit it as well as following these instructions.

Information:



JND472 Lantern Village Scenes, as you can see from the photo above the first 4 dies have been designed to give a hillside. As usual I am going to give all the dies a number so that they can be referred to within the instructions.

- 1) A window outside cutting die with a left-hand hill with small deer on it
- 2) A window outside cutting die with the Church and house on it
- 3) Shorter window with outside cutting die with a house and tree on it
- 4) A window outside cutting die with the right-hand large house on it
- 5) A Stitched Window
- 6) A Plain Cutting Window

- 7) House similar to inside of die no. 4, but with different shaped hills
- 8) Tallest houses sitting on a different shaped hill
- 9) A Deer and young Dow on wavy hill
- 10) A Deer with different trees on both sides of the hill
- 11) A Deer with different trees on both sides of a different hill

These dies will also work well with the new Tag dies (JND462 Deer Scene Tags & JND463 Tag Favour box dies). There are separate instructions for these on the group.

Materials

JND470 Tall Lantern – Medium (3)

JND472 – Lantern Village Scenes (11)

Essential Coconut White Card

Battery Lights

3mm White Satin Ribbon

Hawthorns, Pinecones, and Pine boughs left over from another project

CA 3D Glue Gel

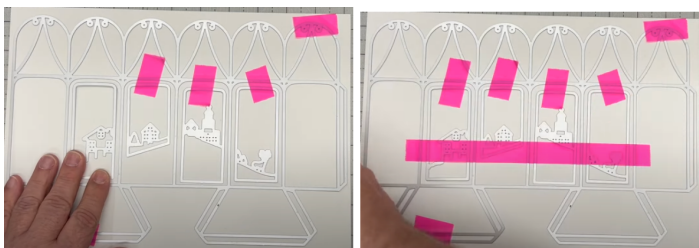
A4 Die Cutting Machine

3M Craft Mount Permanent Spray Adhesive

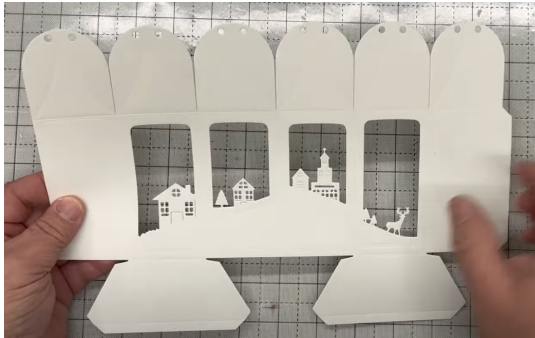
Craft Kit

Method:

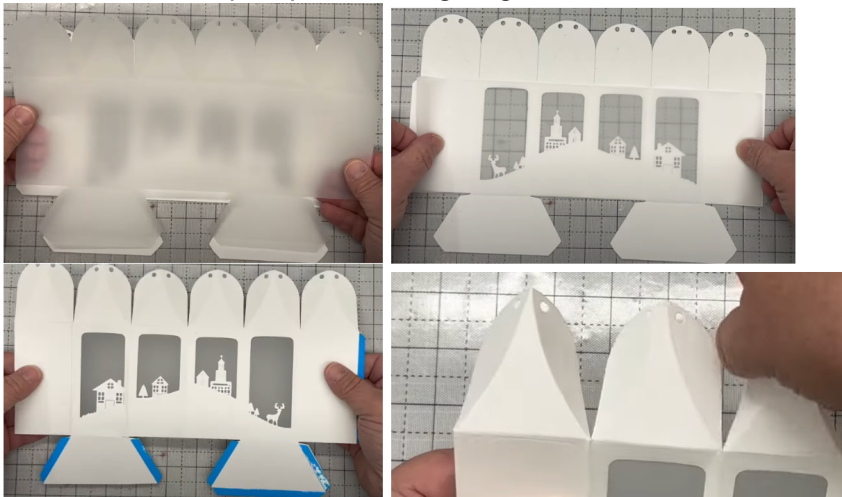
- Bring in your A4 piece of Coconut White card and tape down the main Tall Lantern die evenly onto it. We are then going to add our scene dies inside, for this we need to work from the right-hand side to the left, so leaving the right-hand panel clear, we need to add inside the next 4 panels, dies 1, 2, 3 and 4 tape them down as you go along. Then take a long piece of tape for security add this across all the dies. Run through your A4 die cutting machine.
- We are only going to cut one of these out but if you wanted to cut more of these lanterns out with the same inside panels on them you just need to remove the cut lantern and add the die onto another A4 White or coloured card. and die cut them.



- When you cut this out and you remove all the fall away pieces, you can see all the scorelines and the inside panels in order.

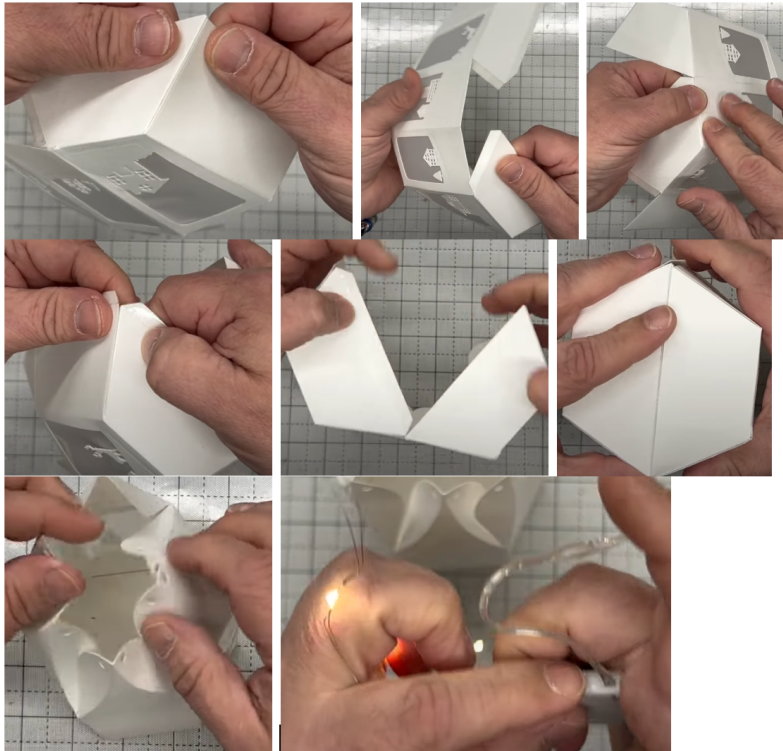


- There are 2 ways to do this next bit, firstly using just the Tall Lantern die cut this out in plain Vellum if we then put this on the inside of our Lantern it is very bulky so what you can do is to cut another piece of Vellum and die cut it, you can then see where the fold lines. So cut the top and bottom pieces off and you can fold all the score lines, this will then fit nicely over the middle of your Lantern.
- Take the white Lantern and fold all the lines over as valley folds, press down with your bone folder. For the top one just fold the right and left hand piece towards you and they will fold inwards. There is another set of instructions on the group which shows how to make the Lantern up, visit this as it may help you if you have never done a Lantern before.
- Using spray glue or powertape and adhere the Vellum onto the inside of the Lantern.
- Turn the Lantern over and add 6mm powertape on the end right-hand end tab. On the base tab at the bottom below the deer panel, you need to add 6mm powertape onto the 3 sides. On the left-hand one below the larger house, you need to cut off at the bottom fold line and then add powertape down both sides, you can see this in the photos below.
- For the top flaps we are going to fold these towards the back.



- To put this together simply remove all of the blue powertape and bring the end plain panel up towards the bottom flap making sure that they are stuck exactly at the end. Then fold over the next one, you have made the first half.
- Then keep folding the panels and sticking them down until you get to the last one. You then end up with the 2 bottom pieces joined up with the sides, and all you do is to slide the bases together, sticking them down.
- Then bring the sides together evenly and press them down, you can put your hand inside to make sure they are all stuck.

- Then stand the Lantern up on your desk and go around the tops and pinch the sides in.



- Take your battery lights or one of those single candle lights. Unwind the lights, turn them on to test them. Then squidge them together like a little ball and put them inside your lantern, so that the battery end is hanging over between the 2 plain panels. Add 2 strips of the 9mm blue powertape side by side onto the side of the battery pack, making sure it is not the opening side, or you won't be able to change the battery when it runs out. Remove the blue backing and add onto the side of your Lantern.



- We can now close our Lantern up. Take some 3mm white ribbon, cut the end off at an angle to give you a fish-tail point and starting at the central point opposite the battery end, thread the ribbon through the 2 holes and pull the ribbon through quite a lot, continue all the way around, then holding both ends of the ribbon in one hand then with the other hand hold the top of the Lantern and pull the ribbon out with your right-hand, you can then see the beautiful pattern on the top of the Lantern.
- Take your ribbon ends and tie one end of the ribbon twice around the other end and pull, this will give you a much stronger knot on your Lantern as well as pulling the top of the Lantern together. You can then tie a bow and take your scissors to cut off the excess.
- John has already got left over from another project some Hawthorns, Pinecones, and a little bit of the Pine boughs that we launched earlier this year, they are all cut using the Natural Pine pack of canvas card.

- The easiest thing to use to add these onto the top of the Lantern with is the new CA 3D Glue Gel, and it doesn't smell like other makes do. Lay the tube onto your table top and press down until the Gel begins to come out, then using a cocktail stick wipe the gel onto it and add this onto the back of the foliage and add that onto the top of your Lantern. Continue until all the foliage has been added, you will need to gently mould the pine cones over your finger to shape them before adding onto the top. You could also add small pearls or gems onto the ends of the Hawthorn if you want, but I would suggest that you use Glue Glaze to add each one onto the ends.



You then have your stunning Lantern decorated on the top with the lights on, I can't wait to do this one.



Your Lantern is now complete, I hope you have enjoyed these instructions.