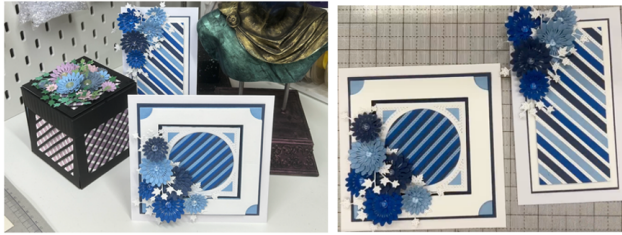


## CCL Notched Frame, Zora Flower & Vine Leaves - 29 January 2025 - by John Lockwood



Instructions compiled by June Smith.

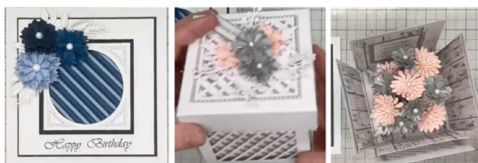
John was on the 'John Next Door Official' live facebook group on Wednesday 29th January 2025, showing how to make a Box and 2 different cards all using the new Notched Frame, Zora Flower & Vine Leaves which are his latest releases. All the frame maker dies coming out this year are all different shapes. Craft Cave Live is about giving you 'Tips, Techniques, Demo's & Ideas – it is not about selling you products or this price etc. If anyone does ask a question Sam will sometimes slot a link in to a product. If you have a question all you need to do is to type 'Q' or Question and then the question and we will answer them at the end or if important, as we go along, they are usually at the end of these instructions, also at the end is a photo of some of the amazing cards and boxes made using the dies etc.

On Saturday Night Live on the Art of Craft Website we will be showing you the new releases coming up e.g. the new Notched Corner Nesting Dies which have been used to make some of John's samples.

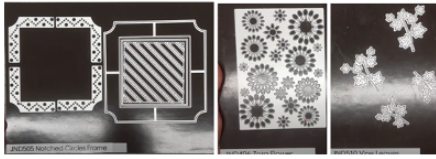
### Information:



Below is a Card and an Exploding Box made by Leslie Lakin, both of which are stunning, so John is going to make his take on these tonight which is not only using the new release but also about using the dies we already have in our stash. So, first of all we will make John's version of the card.



## Preparation & Product Information:



JND505 – Notched Frame (7)

Die 1 – Main FrameMaker ( $\frac{3}{4}$ " wide square inner frame which is x 5" wide, it has a notch in all 4 corners of the outside of the frame.)

Die 2 - 5 - Notched Patterned panels to fit inside the main frame.

Die 6 –  $3\frac{1}{4}$ " Square die

Die 7 – 3" Inner Diagonal Stripe die



JND478 – Box Maker Die Set (7)

Die 1 – 4" Square

Die 2 -  $3\frac{3}{4}$ " Square

Die 3 – 4" Circle

Die 4 -  $3\frac{3}{4}$ " Circle

Die 5 – Decorative Circle Panel

Die 6 – Tall Box Maker Strip (2" depth)

Die 7 – Short Box Maker Strip (1" depth)

The strips on dies 6 & 7 are every  $\frac{1}{4}$ " and the loops are every  $\frac{1}{2}$ ", making these really easy to make.



JND489 – Georgian Frame (16)

Die 1: – 5" x 5" Main Frame It die, with a  $3\frac{1}{2}$ " square in the middle of the frame, this gives a  $\frac{3}{4}$ " frame all the way around.

Dies 2: – 5: - These are the 4 debossed cutting dies which are slightly smaller and will fit inside the Main Frame, these highlight the mitred corners

Dies 6: – 9: - These are the 4 Georgian debossed pattern dies (they don't cut in or out ) that fit inside dies 2 – 5.

Die 10: - Square die which fits inside the Main Frame It Die

Die 11: - Square double stitched cutting die with double stitched corners on it

Die 12: - Inside Plain Circle

Die 13: - Decorative Filigree Circle Frame

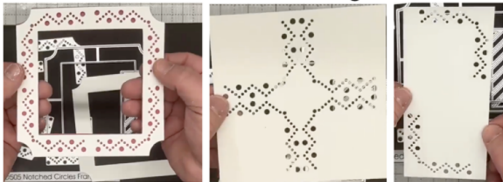
Dies 14: - 16: are decreasing in size double stitched circle dies.

### Materials for the cards:

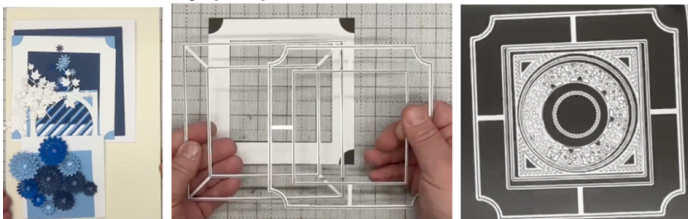
6" x 6" White Top folding Card Blank  
JND478 – Box Maker Die Set (7)  
JND489 – Georgian Frame (16)  
JND505 - Notched Frame (7)  
JND496 Zora Flower  
JND510 Vine Leaves (4)  
Essential Coconut White Card  
CA Canvas Card in Soft Blues  
CA Canvas Card in Deep Blues  
Clear Glass Beads  
3M Display Mount Spray Glue  
Craft Kit

### Method:

- If you cut the Notch Square Frame out of white card, then the 4 corners and finally another colour of the frame you can see how these layer up perfectly. You can also use the 4 corners placed in a different way, so you get another completely different pattern. You could also just use 2 corners to make a perfect DL shape. You could also use the Georgian Frame, and the Main Frame Maker dies together to make a completely different frame, there are so many possibilities when you combine all the different die set already released and the new one coming soon.

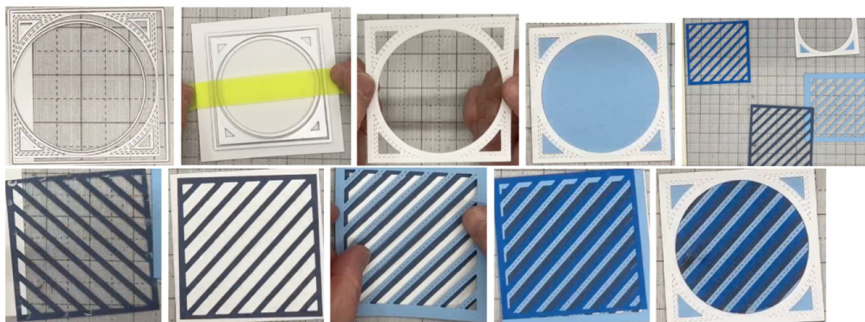


- Let's start to prepare our card, the first photo below is of all the die cuts already prepared but I will list them all below:

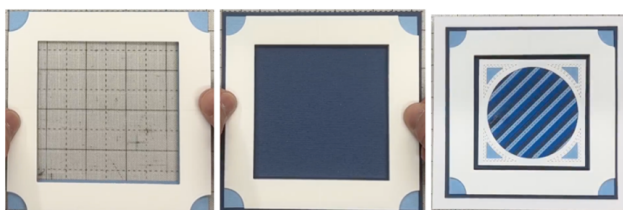


- We are going to start with the centre square, so cut a piece of Coconut White Card to 4" x 4" and place this evenly onto your Multi-media mat, we are then going to add dies from the Georgian Frame set, so take out the following:  
Die 10: - Square die which fits inside the Main Frame It die,  
Die 11: - Square double stitched cutting die with double stitched corners on it  
Die 12: - Inside Plain Circle
- Place the 3 dies face down on your mat and take a long piece of removable tape and add this over the circle die, you then have 2 handles of tape so you can pick up the circle die and place over the inner frame, press down and

- repeat to pick up the square die then place evenly onto your white square of card, you could use 2 strips one going across and one going down if you wished, although it is not necessary, then run this through your die cutting machine. We are then going to add spray glue onto the back and adhere it onto a soft blue square cut to 4" x 4" and press down. You can see that there is a little bit of blue overhanging on one side, if you get this just use your scissor to cut it off. Then take the circle die and drop that into the middle, tape it down and run through your die cutting machine, this way we get the circle cut out and the lovely corner blue panels still in place. Keep the blue circle for another project.
- We are then going to use die no: 7 from the Notched Frame set and cut this out of 3 different blues, John has already cut 2 of them out and for the darkest blue he has cut the card to 4" x 4" and die cut it.
- Take a small square of white card just slightly larger than the darker blue die cut, turn it over so you are looking at the back and add a few dabs of glue glaze along the outside edges of all 4 sides and add it onto the white square, the reason we have not added wet glue is because we want the strips to appear to be floating rather than stuck down. Then repeat this process with the lighter blue but offset it on top of the dark blue. Then we are going to repeat with the medium Blue off setting it, so you don't see any of the white. Finally add the main frame onto the front using CA Super Tacky Glue, and snip off any of the over-hanging card.



- We now want to add this onto a card front, so take the darkest blue card and cut it to 5¼" x 5¼". Then from white card add die no 1 from the Notched Frame set and run this through your die cutting machine, we then do the same from the lighter blue but this time using die no 1 from the Georgian Frame die set. We then foam mount the white frame onto the light blue and foam mount that onto the dark blue card – you could do all of this flat if you wanted too. Add wet glue onto the back and adhere straight onto your 6" x 6" top folding card blank. Then position the smaller square we have just made into the middle and look how all the layers stand out. So, add foam tape into the back and adhere onto the middle of the card.





- All we need to do now is to decorate the front of this card. John has pre-made these and there are separate videos and instructions of how to make these on the group. We will be using the 3 colours of blue to make the Zora Flowers up, adding a Clear Glass Bead into the middle, some are doubled up and from the white card some of the Vine Leaves, which brings that colour out. You don't always have to use green card for the foliage, if you look the Ivy has the stitch pattern on it to match the double stitching around the white corners from the die cut as well as single stitching on the inside different blue strips so they all tie together.
- John is using glue glaze on the back of the leaves to add them onto the bottom of the circle, so they are in opposite directions, then adding one leading down from the middle towards the corner and a smaller one just leading off from the top left of the Ivy. Then it is just a case of adding the flowers using CA glue gel onto a cocktail stick as a handle to place the 3 larger flowers in the right place, then the medium ones. Then adding one of the smaller white leaves under the middle of the flowers just like they are in real life.
- Below are some of the screen shots showing the different stages, hopefully these will be helpful to you. Also, there is the finished card and a DL card that John made just using the waste from the first card, I am sure you will agree with me that these are fabulous samples, thank you so much John.



- Also below is another card that John has made and this time he has used stamens coming out of the Zora Flowers with another flower layer behind, it really looks amazing.



**Box:**

John has then pre-cut a lot of the following pieces out and he will show us how to put together a beautiful box, still using the main dies we have used previously. There are already separate instructions of how to make a box using the JND478 – Box Maker Die Set, you can find this in the group anytime, you can also download this for your own use.



### Materials for the Box:

For this we will be using the same dies as previously as well as the following:

Black Card

CA Canvas Card - Spring Green

CA Canvas Card – Summer Green

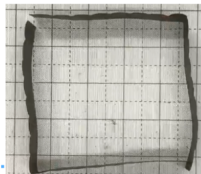
CA Canvas Card – Lilac

CA Canvas Card - Soft Blues

CA Sparkle Faceted Apple Green Gems

2mm Foam Tape

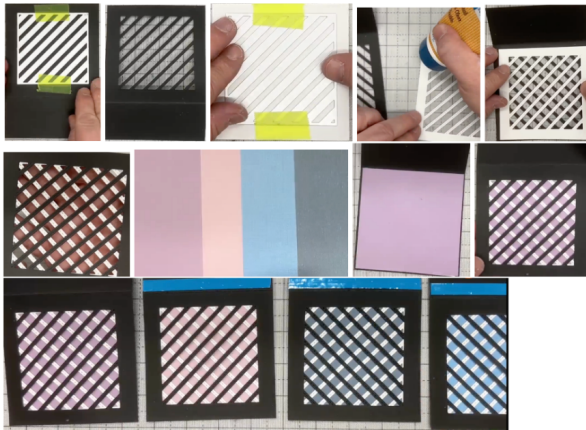
- John has already pre-made up the box lid using a 4" square of back card, and 2 strips cut from die no: 7 from the JND Frame Maker die set. He has folded each piece over to form the sides, folded the loops over, secured them with tape and added the lid onto it.



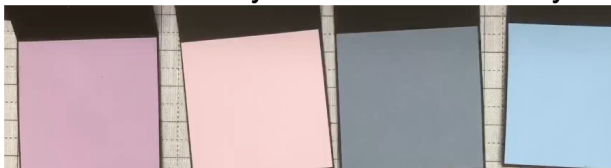
### Box:

John has then pre-cut a lot of the following pieces out and he will show us how to put together a beautiful box, still using the main dies we have used previously. There are already separate instructions of how to make a box using the JND478 – Box Maker Die Set, you can find this in the group anytime, you can also download this for your own use.

- Cut 4 pieces of black card cut to  $5\frac{3}{4}$ " x 4", then score down the long top edge at  $1\frac{3}{4}$ ", and fold over, the square should measure 4" square. Repeat this for the other 3 pieces. Then take Die 7 – 3" Inner Diagonal Stripe from the Notched Frame, and place this centrally on the 4" side, tape it down and run through your die cutting machine, repeat for the remaining squares, keep the fall away strips for another project. Then take a piece of Coconut White card cut to  $3\frac{3}{4}$ " x  $3\frac{3}{4}$ " and add the same diagonal stripe die onto it and cut that out. Then turn your black piece over so you are looking at the back, then add wet glue to the front of the white panel and rotate it 90 degrees and add onto the black panel so you are matching the corners.
- Then take 2 colours from the Lilac pack and 2 colours from the Soft Blue. Cut the Lilac to  $3\frac{7}{8}$ " x  $3\frac{7}{8}$ " and glue this onto the inside diagonal white panel as we did before. You then need to repeat this for the other 3 panels, using the other 3 colours.



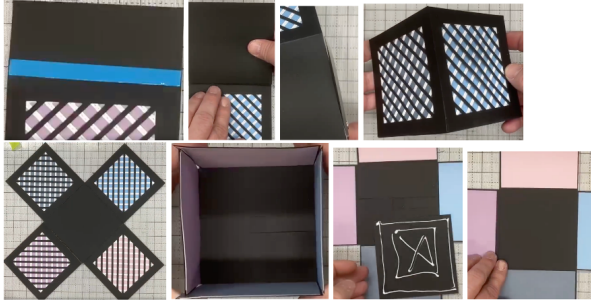
- Then when you turn them over they are nice and neat on the inside.



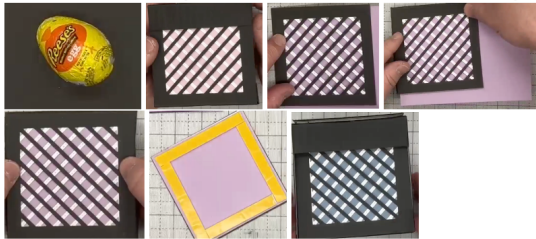
- John has then pre-cut and made up some of the Zora Flowers in the 4 different colours and sizes, then added a Sparkle Faceted Gem into the centre, these are different sizes, so they fit perfectly. He has also cut out some of the Vine Leaves in different shades of Green. We will put the leaves and flowers to one side whilst we make up our box.



- You can see on the front panels above that John has already added 9mm Powertape just above the fold on 3 panels, so he now adds the tape on the 4th one.
- Then cut another piece of black card to 4" x 4" and another piece slightly smaller at 3<sup>7</sup>/<sub>8</sub>" x 3<sup>7</sup>/<sub>8</sub>" – this will be the bottom of the box.
- Remove the blue powertape from one of the sides and add the 4" square just very slightly away from the fold and press it down, if you put it right over the fold it will not work (yes I have done this before). If you find that you are a little bit off then trim this off with your scissors. Then repeat this for the remaining 3 panels. You can see already what it looks like just with 2 panels added. **June's Tip:** If you find that there is a little bit of sticky showing where the fold is, just add a tiny bit of talc over it, then brush off the excess and it will not be sticky then.
- If you then bring up the sides you can see how your box is forming, you can just see the bottom inside of the box where the panels were folded over, yes you have guessed it, this is where we will add wet glue onto the slightly smaller black square and drop the sides down so you can add this into the middle.



- John wants to add a Reese's Easter Egg in his box. Then bring up the sides and pop the lid on top.
- We now want to decorate the top of our box so cut another piece of black card to 3 7/8" x 3 7/8" , also a piece of white the same size, and cut out the die no: 7 from the Notched Frame, add wet glue to the outside of the white and offset it onto the black. Then all you need to do is to choose which colour panel will go behind it, John has chosen the Lilac for his lid. We want this to stand out a bit so add a little bit of foam tape around the outside, remove the yellow backing, add a few dabs of wet glue to stop the static and add onto your lid.



- Bring in your CA Glue Gel and a cocktail stick or similar and take 3 blobs of the gel and add this onto the top centre of your box. Then arrange your leaves by poking the ends into the gel. It gives you time to arrange all the leaves how you want them, and you can use your cocktail stick to bring some of the gel over the top of the stems. Then again using the gel add your largest flowers first, then add the medium ones so that they are at opposite ends, continue with the smallest flowers and also more leaves, it is your box so decorate it how you wish.

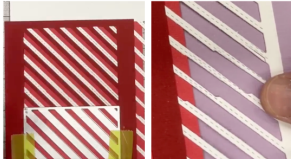




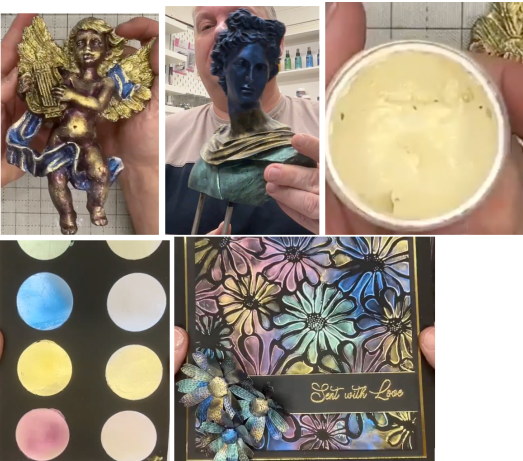


Q: Karen asked if you can extend the panels.

A: Yes you can you just cut it out once from a long piece of red card, remove all the fall out pieces and save for another card, then slot the die back in further down and cut that out, ignore the colours behind as these are being used for another card by John. If you wanted to extend it to a square it is a bit of a nightmare to line up as you can see in the photo, so just make sure you line it up evenly.



Sam has made the below, isn't it beautiful it is using the brand new Star Light Pastes. These will be available to purchase on Live Shopping on Monday night, remember you only get until 8pm to shop on the channel or everything is available on their website, prices don't change, if there is any stock left afterwards. Also below is another one of Sam's, it is a 'Bust of a Lady', nor sure who she is. It is using the white reactive and on black it goes gold. There is another one that turns blue. There is only 4 colours, but you can paint them to turn to different colours, Emerald, Ruby, Sapphire & Gold, and it is waterproof. John has got a new idea using on stencilling to make it a lot, lot easier.



I hope you have enjoyed these instructions.