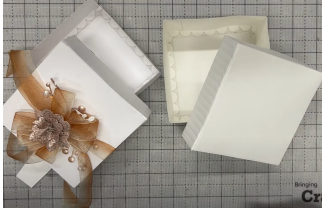


JND478 – Box Maker Die Set – Square Box - by John Lockwood



Instructions compiled by June Smith.

John has created a 'You Tube' video using JND478 – Box Maker Die Set dated 29 December 2024, to make a square box, there is another set of instructions showing how to make a round box using the same die set. I would advise that you visit them as well as following these instructions through to the end before commencing the project.

June's Tips: Always use blue powertape or a good quality red liner tape, please don't use ordinary double sided sticky tape because it will not hold the box together. This applies to any die, place your pieces onto your cutting plate at an angle, this helps to cut the dies in one pass. Also use your glue eraser to remove any unwanted marks.

Information:



Die 1 – 4" Square

Die 2 - 3³/₄" Square

Die 3 – 4" Circle

Die 4 - 3³/₄" Circle

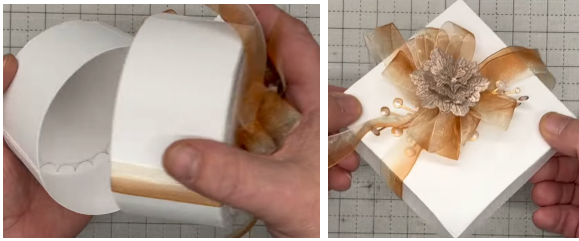
Die 5 – Decorative Circle Panel

Die 6 – Tall Box Maker Strip (2" depth)

Die 7 – Short Box Maker Strip (1" depth)

The strips on dies 6 & 7 are every 1/4" and the loops are every 1/2", making these really easy to make.

These are the 2 different types of boxes from the front of the packing.



Today we will be making the basic 1" depth Square Box, and also a 2" depth.

Preparation:

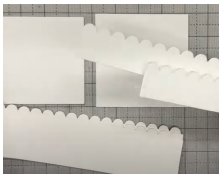
Using Coconut White card cut out:

Die no: 1

Die no: 2

2 of Die no: 6

2 of Die no: 7



Materials:

JND478 – Box Maker Die Set (7)

Coconut White Card

A4 Die Cutting Machine

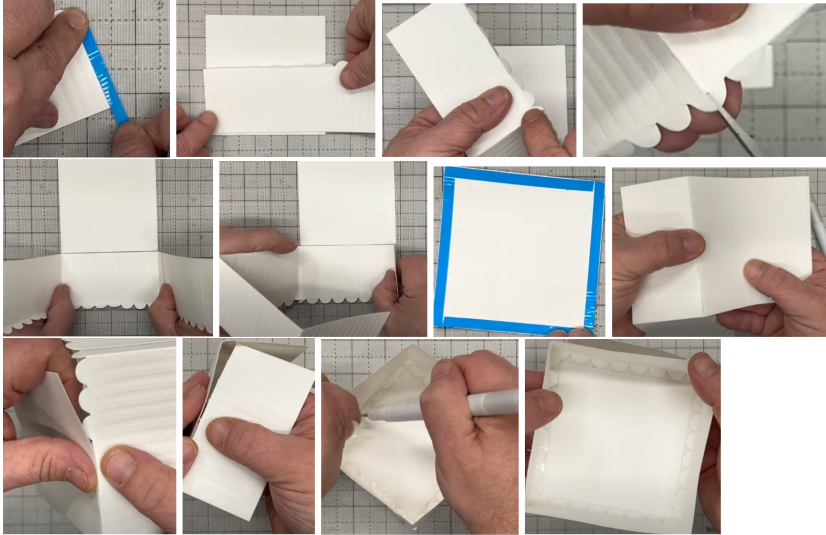
Blue Powertape

Craft Kit

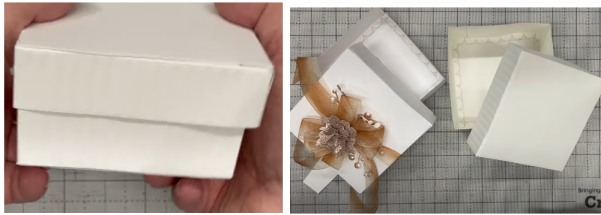
Method:

- Bring in your smaller white square. Then fold over the scalloped edges on the 2 larger scalloped pieces. You will notice at one end there is a little flat piece, this is where you would add your blue powertape, remove the blue backing tape, it is a little bit wide so fold the sticky bit back on itself, then add the other scalloped panel onto it, that ensures that it is exactly the right measurement for the square.
- Then all you do is to line up the edge of the scalloped piece with the edge of the square, you can then see that the right hand edge of the square is where you would fold the scalloped piece over. You could also do this a different way because we know that each of the scalloped edges are $\frac{1}{2}$ " wide, so if you count the loops you should have $7 \times \frac{1}{2}$ " loops which equal the $3\frac{3}{4}$ " side of the square. Then take your scissors and snip down the folded scallop. You can then count the $7 \times \frac{1}{2}$ " loops and fold over, to check that it is the correct size you can line this up with the edge of the square. Repeat this for all 4 sides.
- Add blue powertape on the front of the 1st edge. Bring in your white square and add powertape along all 4 edges, remove all the blue backing and

starting with the end that has the powertape on it, add the square onto the fold over loops. Repeat all the way around, removing the blue tape on the end side so that the excess end card fits inside of the box (or you could snip off the excess from the end). Press the inside loops down with your multi-purpose tool or your fingers.



- We then do exactly the same process to make the lid using the other scalloped piece.



- You have then made your basic box, Can you think of lots of ways to decorate your box, or using the different shaped bases you can make a variety of boxes, as the photo's below show you.

I hope you have enjoyed these instructions

Here we have a variety of different shapes of boxes which have a 2" base. Including a brilliant Hat Box which has been made by Leslie Lakin.

