

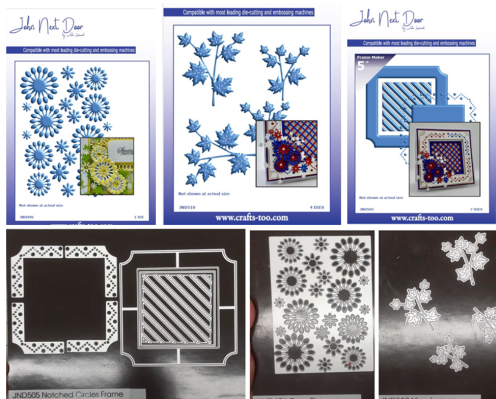
JND496 Zora Flowers & JND510 Vine Leaves – All about the Zora - by John Lockwood



Instructions by June Smith

John has created a 'You Tube Video' dated 23 January 2025, using the new JND496 Zora Flowers & JND510 Vine Leaves dies which is 'All about the Zora' where he focuses on how to make the beautiful flowers and leaves for our card. I would advise that you visit it as well as following these instructions.

Information:



Die 1 – Main FrameMaker ($\frac{3}{4}$ " wide square inner frame which is x 5" wide, it has a notch in all 4 corners of the outside of the frame.)

Die 2 - 5 - Notched Patterned panels to fit inside the main frame.

Die 6 – $3\frac{1}{4}$ " Square die

Die 7 – 3" Inner Diagonal Stripe die

JND489 – Georgian Frame

More information coming soon, we are just using the outer frame for this project.

Die 1 – 5" x 5" Frame Maker die

Materials

6" x 6" White Top Folding Card Blank

JND496 Zora Flowers Die (A6)

JND510 Vine Leaves (4)

Essential Coconut White Card

Craft Artist Warm Tones Canvas Card – Various Deep Red Colours

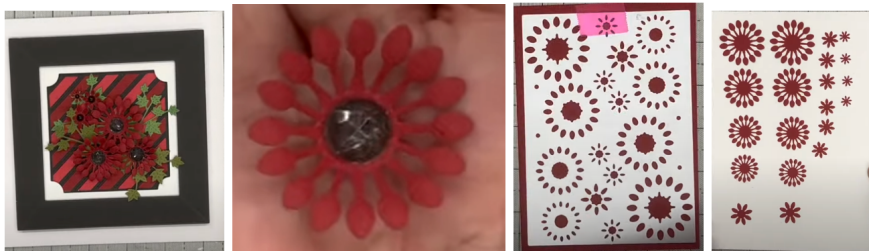
Essential Black Card

Essential Moss Green Card

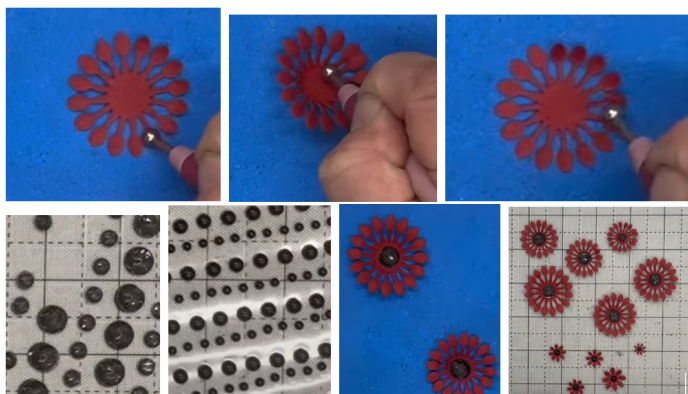
Essential Green Card
 CT Flower Moulding Mat & Ball Tool
 A5 Die Cutting Machine
 Stick on Black Crystal Sparkle Gems
 Stick on Black Pearls
 Glue Glaze
 2mm Foam Tape
 CA 3D Glue Gel
 Craft Kit

Method:

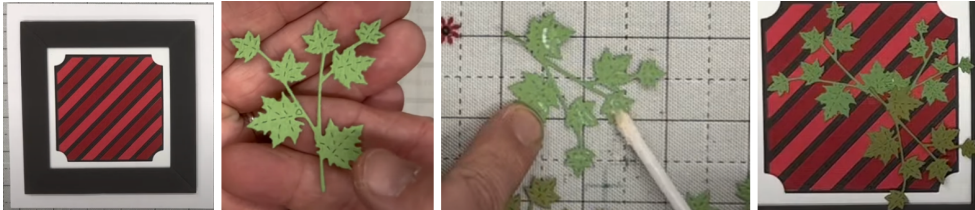
- The Zora Flower die is A6 size, which means that if we take a Red piece of card and cut it down to 5¾", rotate it and cut at 4⅛", this is the perfect size for the plate. You can get 4 of these pieces out of an A4 piece of card which fit any of the JND die plates. All we need to do is to place the die onto a deep red canvas card, tape it down and run through your die cutting machine. Then lay the pieces out on your table in size order, you should have 20 of them in total. If you cut the die from all 4 pieces of card it would give you 80 flowers.



- Bring in your flower moulding mat and ball tool, take the largest flower and turn it upside down on the mat, then using the largest end of your ball tool simply press over the end (they look like little teaspoons) and then back to cup them. Then turn this over and with it still on your mat just go around the outside of the middle circle of the flower to bring up the sides, you then have a 3D flower. Then using your tweezers pick up one of the Black Crystal Sparkle Gems and just place this into the centre of the larger flowers. Then for the smaller flowers use a black pearl. Repeat this for all of your flowers. John has already made some in advance. He will not be using all of them on this card.



- John has then pre-made the base card which is 6" x 6", there is a separate video and instructions showing how to make this. Then the Vine leaves, these have deep detail on the leaves are very delicate, they are the perfect complement to the Zora Flowers, there is a left and a right of both sizes.
- Using Glue glaze on the back of the lighter green leaves and place this onto the front, then repeat for the slightly dark green leaves and add that going the other way and just hanging slightly over the frame. Then take one of the smaller leaves and repeat the glue glaze on the back and add to the front of your card, you can always add more foliage in between your flowers.



- We are then going to add our flowers using the CA 3D Glue Gel with a cocktail stick or similar. Squeeze a little bit out of the tube and use your cocktail stick to pick it up, you can then use the cocktail stick as a sort of handle to move to the correct position on the leaves and press down in the middle of the flower, you can then hold the gem in the middle with one hand and gently pull the cocktail stick out. Repeat this adding the flowers and where necessary another of the leaves in between, which is how they grow. You then have lots more flowers and leaves left over for another project.



Your creation is now complete. I hope you have enjoyed these instructions.