

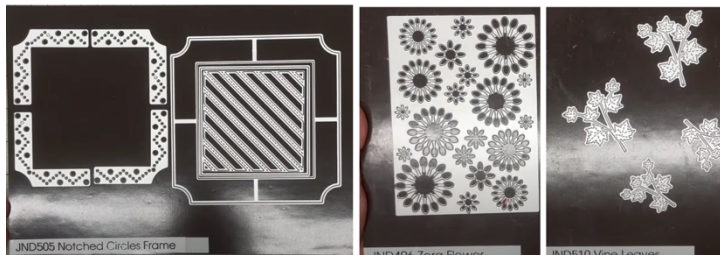
## JND505 Notched Frame – using the insert panels - by John Lockwood



Instructions by June Smith

John has created a 'You Tube Video' dated 23 January 2025, using the new JND505 Notched Circle Frame, which is the latest release in the FrameMaker Series, where he demonstrates how to make a card. I would advise that you visit it as well as following these instructions.

### Information:



Die 1 – Main FrameMaker ( $\frac{3}{4}$ " wide square inner frame which is x 5" wide, it has a notch in all 4 corners of the outside of the frame. )

Die 2 - 5 - Notched Patterned panels to fit inside the main frame.

Die 6 –  $3\frac{1}{4}$ " Square die

Die 7 – 3" Inner Diagonal Strip die

### Materials

Premade 6" x 6" White Top Folding Notched Card Blank

JND505 Notched Circle Frame (7)

JND496 Zora Flower

JND510 Vine Leaves (4)

Essential Coconut White Card

Craft Artist Warm Tones Canvas Card - Deep Red & Orange

Craft Artist Cool Tones Canvas Card – 2 different greens

Die Cutting Machine

3M Display Mount - Permanent Spray Adhesive

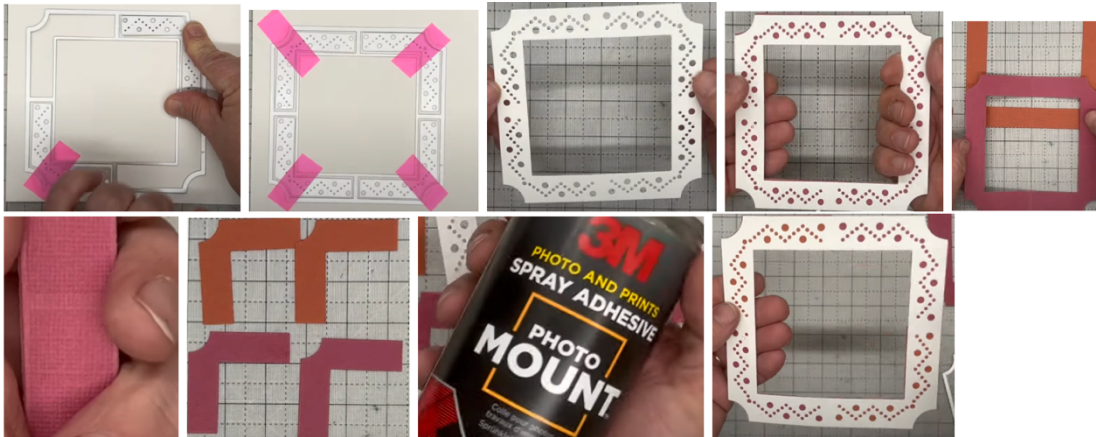
Glue Glaze

2mm Foam Tape

Craft Kit

## Method:

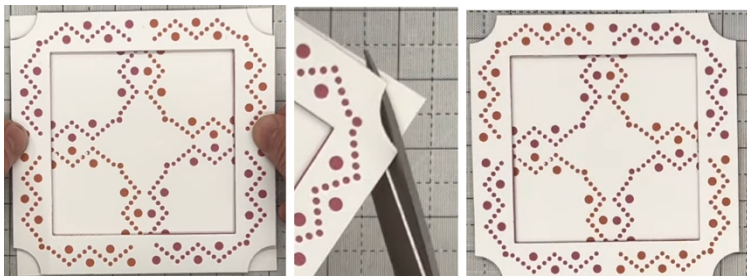
- Take a piece of Coconut White card and place die no 1 (Main Frame Maker die) onto it, we are not going to tape it down yet because we want to add the bottom left-hand corner decorative insert frame so that it is central and tape that down. Then repeat to add all 4 corners. You could if you wished, just make a card with a combination of inserts 1 corner, 2 corners opposite each other, 3 corners or all 4 corners as we are doing here. Run through your die cutting machine, you then get this beautiful panel.
- Then using the Deep Red and Orange card together cut out just the frame, this then allows us to play with colour, If you look at the close up of John holding the frames you can just see the etched line across the middle of all 4 sides. If you then cut across these lines you get 4 corners of both colours, we are only using 2 of each colour so you have 2 left over to make another card.
- Take your white frame and add spray glue or wet glue onto the back and place it face down onto your mat, then add the relevant corners onto it, each corner is symmetrical so each of the 4 pieces will fit into any of the corners exactly. Add 2mm foam tape onto the back and put to one side.



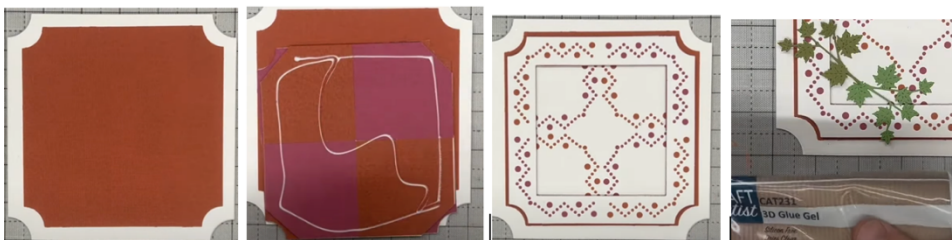
- Cut a piece of White card to 5" x 5" and we are going to create a pattern that doesn't exist using the corners. Place the 4 corners on your mat, and butt 2 of them together so the notch of the corners are together, tape them down. Do exactly the same with the bottom 2 dies and tape them together. We can then move the bottom up to the top ones and make sure they fit exactly; you should see the circle in the middle. Then we are going to add them onto the white card using the lines on your mat to get them even, tape them down in the middle and run through your die cutting machine. You then have this beautiful pattern piece below. Then cut out 2 each x 2½" squares of both of the coloured card and place them onto the back alternating the colours. As we did before, spray glue onto the back of the white piece, lay face down onto your mat and add the squares into position.



- We can then bring back in our frame and remove the yellow backing, then hover over the cross piece making sure the colours mix, until it is even all the way around, you can just see the 2 dots behind the frame and press it down. Then all we do is to take your Titanium non-stick scissors and cut off the corners. If you have any of the background card over hanging just use your scissors to trim it off.



- Create a card blank of the same shape using the new Presscut PCD136 Notch Dies which are due out about 4 or 5 days after these Notched Frames are launched. Also, from one of the smaller dies in the set cut out your first layer of the Orange card. Then take your card front and add wet glue onto the back and adhere this onto the card blank.



- The JND510 Vine Leaves are due out in February, John has cut 2 sets from the Dark Green and Moss Green canvas card. Add glue glaze onto the back of the leaves and add these onto the front of your card. John has also pre-made up some of the Zora Flowers in the red and orange colours, there is another video and written instructions separately showing how these were created. These have been added to the card using CAT231 3D Glue Glaze, and a small cocktail stick. Put to one side until they are dry.



Your creation is now complete. I hope you have enjoyed these instructions.