

JND498 Shirley Flower & JND495 Twisted Vines - by John Lockwood



Instructions by June Smith

John has created a 'You Tube Video' dated 6th February 2025, where he demonstrates using the new JND498 Shirley Flowers & JND495 Twisted Vines dies shown below. I would advise that you visit it as well as following these instructions.

Information:



Materials

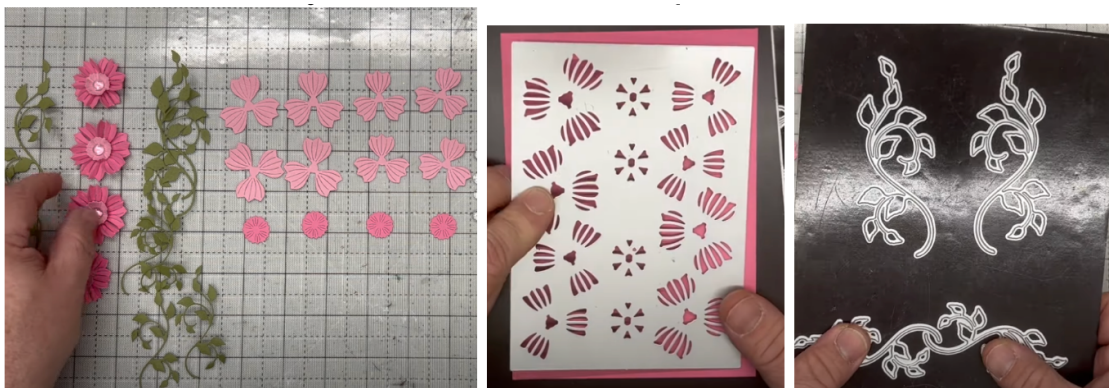
6" x 6" White Top Folding Card Blank
JND498 Shirley Flower
JND495 Twisted Vines (4)
Essential Coconut White Card
Craft Artist Warm Tones Canvas Card – Soft Pink and Deep Pink Colours
Craft Artist Summer Greens Canvas Card – Moss Green
Clear Dew Drops
Die Cutting Machine
CA Glue Gel & Cocktail Stick
CA Glue Glaze
Craft Kit

Method:

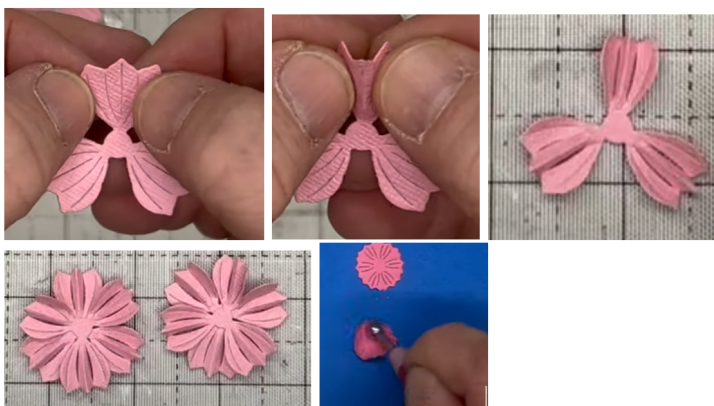
- Take your A4 Deep Pink canvas card and cut it in half down the long edge, you then have 2 pieces which are A5, if you then cut each of these in half you

end up with 4 pieces which are A6, which is the perfect size for most of your flower die plates. Repeat this using the Soft Pink. We only need one of each, but if you wanted to cut them all out so you have a store of them then of course you could do this. You will then need to cut out a set of the flowers from both colours and lay these in size order on your table top, you should have 4 sizes of the larger Soft Pink petals and 4 of the Soft Pink smaller size, and 4 of the Deep Pink centres.

- We then need to cut out some of the Twisted Vines from the Moss Green canvas card and lay them onto your table top. You will have 2 of the large which are left and right and 2 smaller ones which are exactly the same shape, this is because these have been designed so that they can fit as if they were intertwined, you can see this in the photo below.



- We now want to shape the flowers, you can see that the die has 5 cut lines on the petals, all you need to do is to fold the middle line over towards you and then bring the 2 outside lines towards you, don't need any tools or anything just your fingers. Repeat this for all of the flowers. You will need 2 flowers offset each other to make a full flower. Take your glue glaze and add a dab into the middle of one flower and offset the other flower onto it. Repeat for all the flowers.
- Bring in your moulding mat and place the 4 centres onto it, these also have cut lines in them, so it is very easy to go around in a circle with your ball tool to cup them. It is so easy to do them in different shades of pink and interchange the colours for each flower. Then all you do is to add a dab of glue glaze into the middle of your flower and add the cupped centre onto it. Then add glue glaze into the very centre and add your clear dewdrops into the middle.



- Lay all the completed flowers and vine leaves onto your table, so you have 4 flowers in the Soft Pink with Deep Pink centres, and 4 flowers the opposite way around. You should also have 4 of the larger Vine Leaves and 4 of the Smaller Intertwining ones.



- John as pre-made a 6" x 6" card using the new Charlies Notched Frame die set, an Embossing Folder and some of the New Pastes (there are separate instructions and videos that you can watch to see how this was made).
- Take one of the larger vines and add glue glaze onto the back of the leaves then add this so that the bottom of the vine is just below the 'Sent with Love' banner, and then glued onto the banner and up to just over the edge of the frame. Then we repeat this on a second vine piece but this time the stem of the vine is going along the bottom of the frame, so there is a gap in-between. Repeat adding the vine leaves so they look as if they are winding their way around the frames, you can add as many or as few as you wish.



- To add the flowers, we are going to use the CA 3D Glue Gel and a cocktail stick or a toothpick to add the gel onto the back of the flower and position these around the vines. I am sure you will agree this is such a beautiful card.



Your creation is now complete. I hope you have enjoyed these instructions.